

# MesuLab®

# MesuLab

Lab & Medical Instruments Global Golden Supplier



**MesuLab®**  
MESU ENTERPRISE (UK) CO., LTD  
MESU LAB INSTRUMENTS (GUANGZHOU) CO., LTD  
广州市美仕优仪器有限公司



## ABOUT US

Mesu Lab Instruments (Guangzhou) Co., Ltd, is a professional manufacturer of laboratory measuring instruments, which is concerned with the design, development and production.

Our business mainly covers Moisture Analyzer, Viscometer, Spectrophotometer, Analytical Balance, Water Quality Meter, etc.

## PRODUCTION



① Raw Materials



② Electric Board Production



③ Instrument Assembly



⑥ Instrument Package



⑤ Instrument Debugging



④ Instrument Aging



# OUR ADVANTAGES

More than 20 years professional experience factory , we are specialized in developing, designing,manufacturing and marketing for laboratory instruments.



24 Hours Service



20 Years Experience



12 Months Warranty



1 Unit MOQ



1 Day Stock Lead Time



Low Factory Price

## CERTIFICATE



## EXHIBITION SHOW



## USER CASE



## PARTNER VISITING



## Automatic Atomic Absorption Photometer



### ● Introduce

ME-AA1800 series Atomic Absorption Photometer is an expert in the use of the latest international technology and domestic famous universities jointly complete R & D, R & D and application experience with decades of spectroscopic instrument. It include the flame and graphite furnace and hydride generation system, which can be equipped with various accessories, flexible configuration program can meet different levels of customer demand. It can be used for analysis of complex samples full automatic multi functional.

### ● Advance

1. Various analysis methods can automatically switch, unmanned automatic analysis.
2. Soft, hardware were designed innovation to ensure the accuracy, safety, ease of use in the analysis of samples, equipment maintenance, simple and convenient.
3. Widely used in hospitals, pharmaceutical, steel, health and epidemic prevention, metal smelting industry, geology and mining geology, chemical, water quality monitoring, food and drink milk, environmental monitoring, quality inspection, drug, agriculture, toys, electronics, disease control, metallurgy, chemical industry, and forestry, etc.

### ● Specifications

Model	ME-AA1800F	ME-AA1800C	ME-AA1800S	ME-AA1800H
System	Flame system		Graphite furnace System	Flame & Graphite furnace
Position for element lamp	3 position	6 positions	6 positions	6 positions
Grating	1800/mm			
Wavelength range	190-900nm			
Spectral bandwidth	0.1, 0.2, 0.4, 1.0, 2.0nm (automatic adjustable)			
Wavelength accuracy	≤0.15nm			
Wavelength repeatability	±0.1nm			
Baseline stability	≤±0.002A/30 minutes( static) ; ≤±0.005A/30 minutes.(dynamic)			
Light source	3/6 lamps automatic turret, automatic alignment			
Power	double cathode power built-in high performance lamps			
Relative humidity	20-80%			
Environment temperature	15℃-35℃			
Power requirement	220V (5%~10%), 50/60 Hz; 5000VA			

### ● Flame Atomizer

1. Characteristic concentration (Cu) : 0.015μg/mL/1%.
  2. Detection limits (Cu): 0.002μg/mL
  3. Precision: RSD≤0.5%
  4. Combustion head: metal titanium combustion head
  5. Atomizer: efficient glass atomizer
  6. Atomizing chamber: explosion proof corrosion resistant material spray chamber
  7. Control system: automatic PC control six light brick, automatic alignment, automatic optimization and automatic ignition
  8. Safety protection: with automatic safety protection function, anti tempering automatic gas path protection, acetylene gas leakage alarm, automatic shutdown system, abnormal automatic power-off
  9. Background correction: deuterium background correction: correction of the 1A background
- Data processing
1. Measurement methods: flame method, hydride method
  2. Concentration calculation method: standard curve method (1 ~ 3 times curve), automatic matching, the standard addition method
  3. Repetition survey frequency: 1-99 times, calculating the average value, standard deviation and relative standard deviations are given
  4. Results print: parameters print, data and graphics print, you can also export WORD, EXCEL document
  5. Simple and convenient operation, lamp position rotating, automatic ignition through software operating
  6. Communication interface: computer and USB interface communication

### ● Graphite Furnace Atomizer

1. Features (Cd): 0.5 x 10-12g.
  2. Detection limits of (Cd): 0.4 x 10-12g.
  3. Precision: RSD = 3%.
  4. Heating method: vertical heating.
  5. Safety protection: water flow, water temperature, air pressure, the graphite tube bad contact, flow and power alarm protection.
  6. Conversion mode: flame / graphite furnace automatic switch machine, electronic mobile platform software control, without the need to manually remove.
  7. Heating temperature control mode: room temperature -3000 degrees Celsius, automatic temperature control up to 20 order, the furnace enriched up to 20 times, 4 kinds of heating mode, longitudinal optically monitoring the graphite tube wall temperature.
- Background correction
1. Flame: deuterium lamp + self absorption background correction: correction of the 1A background.
  2. Graphite furnace: deuterium lamp + self absorption background correction: correction of the 1A background.
- Data processing
1. Measurement methods: flame method, graphite furnace method, hydride method.
  2. Concentration calculation method: standard curve method (1 ~ 3 times curve), automatic matching, the standard addition method.
  3. Repetition survey frequency: 1-99 times, calculating the average value, standard deviation and relative standard deviations are given.
  4. Print print print the results of parameters, data, graphics, you can export Word, Excel document.

5. Simple and convenient operation, and can be operated through software, to realize the automatic conversion of flame atomizer and a graphite furnace atomizer.

Communication interface: computer and host USB interface communication.

#### ● Auto Sampler (Optional)

1. With 70 sample cups (2mL), 6 cups for liquid reserves, blank and matrix modifier, cleaning bottle 500mL, waste liquid bottle.
2. According to the need can be arbitrarily specified sample cup and the reagent cup position, random arrangement, program setting, can automatic analysis.
3. Automatic calibration curve: automatically from a single standard solution configuration from at least 3 different concentrations of standard sample, directly into the graphite tube.
4. Needle minimum sample volume of 1 L 0.1 L incremental selection, selection, sample selection (max. 100 L when 10 L-100 selection selection analysis of L precision is better than 1%).
5. Auto long-term memory into the position of sample needle selection, accuracy of 50 m.
6. Graphite tube hole coordinate adjusting range > + 5mm.
7. Automatic depth adjustment: the sample feeding needle depth changes with the sample liquid automatic adjustment.
8. Automatic standard addition method, the standard sample of up to 20.
9. Cleaning method: internal and external wall while cleaning, cleaning time and frequency adjustable.
10. Solution was injected after the automatic start of graphite furnace heating procedure.

#### ● Hydride Generator (Optional)

1. The sensitivity of (As): 0.15ng/mL/1%
  2. Precision RSD 3%
  3. Atomizer: T type electrothermal quartz absorption tube (corundum jacket, ensure safety)
  4. Automation: only a start button, press gently to complete sampling, occurrence, determination, cleaning of the whole process, can communicate with host on-line automatic reading (host must have this function).
- Can be applied to various readings: applicable to a variety of readings, peak height, peak area of reading reading, continuous reading.

#### ● Detection Method and Determination of Trace Elements

1. Flame atomic absorption spectrophotometry:  
Flame atomic absorption spectrophotometry (air acetylene) determination of elements can be detected PPM level. Sodium (Na), potassium (K), magnesium (Mg), calcium (Ca), chromium (Cr), manganese (Mn), iron (Fe), cobalt (Co), nickel (Ni), platinum (Pt), gold (Au), copper (Cu), silver (Ag), zinc (Zn), cadmium (Cd), lead (Pb), bismuth (Bi), etc..
2. Atomic absorption hydride method:  
Atomic absorption hydride method can be of low melting point elements trace Detection (PPb). Determination of arsenic, selenium (As): (Se), antimony (Sb), bismuth (Bi), lead (Pb), tin (Sn), tellurium (Te), germanium (Ge), mercury (Hg) etc..
3. Graphite furnace atomic absorption spectrometry:  
Detection by graphite furnace atomic absorption, less sample volume, high sensitivity (PPb). Silver (Ag), aluminum (Al), arsenic (As), gold (Au), barium (Ba), beryllium (Be), bismuth (Bi), calcium (Ca), cadmium (Cd), cerium (Ce), cobalt (Co), Cs (Cs), copper (Cu), dysprosium, erbium (Dy), (Er), EU (Eu), iron (Fe), gallium (Ga), holmium (Ho), indium (In), potassium (K), La (La), Li (Li), magnesium (Mg), manganese (

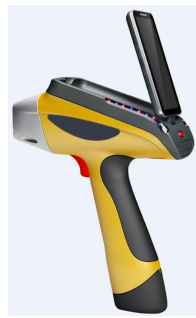
Mn), molybdenum (Mo), sodium (Na), nickel (Ni), platinum (Pt), osmium (Os), lead (Pb), palladium (Pd), PR (Pr), HF (Hf), rubidium (Rb), rhodium, ruthenium (Ph) (Ru), antimony (Sb), scandium (Sc), selenium (Se), Samarium (Sm), tin (Sn), zirconium (Zr), tellurium (Te), titanium (Ti), vanadium (V), zinc (Zn), silicon (Si) etc..

#### ● Standard Accessories

Main machine * 1pc	Acceptance report* 1pc	USB line * 1pc
Air compressor * 1pc	Hollow cathode lamp *3pcs	Dust cover* 1pc
Packing list* 1pc	Atomizer* 2pcs	PC Software * 1pc
Warranty card* 1pc	Spare part case* 1pc	Acetylene hose clip *3pcs
Test certificate* 1pc	3A, 1.5A fuse* 2pcs	3-core powerline * 1pc
Inspection certificate* 1pc	Screwdriver (Dual purpose) *1pc	Acetylene gas pipe (Acetylene cylinders) *3pcs
Signal line (6mm diameter (5.0m); 10mm diameter (1.5m) * 2pcs		
Graphite furnace system * 1pc ( For model ME-AA1800S & ME-AA1800H)		



## Hand held XRF Analyzer



### ●Applications

The new generation of Explorer XRF portable X-ray fluorescence spectrometer series is mainly used for metal materials reliability identification, alloy grades rapid identification, soil heavy-metals field testing and field in situ multi-element analysis for various geological ore, fully meeting the market demand from raw materials testing, process control to field online analysis of various elemental composition in product testing.

### ●Advantages

The introduction of 3 core technologies, miniature low-power end-window integrated X-ray tube, large area beryllium-window silicon drift detector (SDD) and miniature multi-channel digital signal processor, has significantly saved test time, improved the detection accuracy and reduced the errors, which enables the portable analyzers possess paralleled performance to desktop analyzers;

Small in size and easy to carry;

On-site and in situ analysis arbitrarily at any time and any place;

Non-destructive testing;

1-2 s rapid portable analysis ,longer time fine testing by bench-top measurement ;

Measurement can be directly carried out on the sample surface in field analysis, without additional sample preparation, which suits samples of any type, such as electrical and electric products, alloys, geology and mineral resources, soil, rock, residue, small solid particles, and liquid sediment;

Built-in HD camera for ease of viewing the testing point;

The multiple measurement modes to choose from and unlimited number of modes to add at will, together with its automatic matching feature, help achieve easy one-button measurement. Its built-in intensity correction method can correct all deviations from samples of irregular geometric shape and uneven structure and density;

Innovative software interface and core combining EC with FP software has a wider application, with high sensitivity, short test time, easy operation, less restriction for the operator;

12 collimator&filter combination;

Embedded Windows CE system, high resolution LCD touch screen, digital multi-channel technology and SPI data transmission greatly raise the data transmission and data processing ability. Wherever you are, the measurement data is all at your reach;

Triple security: auto-sensing, blank test, two-seconds auto-off X-ray tube with radiation level far below international safety standards, no radiation leakage; thicker protective wall. Protective safety hood;

Two large-capacity 9000mAh lithium batteries can work for 8 hours continuously. Equipped with a wide-voltage AC charger or car-loaded charger ensure test at anytime, anywhere;

Warning indicator system. Powered, the green light is on; testing, the red light flashes to prevent error;

The instrument is of waterproof, dustproof and works continuously in an environment of high temperature and high humidity. Its protective box uses high strength military supplies with good waterproof, shockproof, anti-pressure function.

### ●Standard configuration

- 1) AMP and digital multi-channel system
- 2) Power and control system
- 3) Embedded PDA
- 4) Dedicated XRF analytical software(PDA version)
- 5) Laboratory test bracket (optional)
- 6) 110V/220V universal adapter
- 7) 2× 9000mAh li-ion battery, 1 li-ion charger(27000mAh large-capacity battery is optional)
- 8) Large-capacity TF storage card and TF reader
- 9) Anti-shock, anti-pressure, water-proof lockable portable case

### ●Model

ME-EXPLORE3000 : Analysis Rohs

ME-EXPLORE5000 : Analysis metal , stainless steel, alloy and SS analyzer

ME-EXPLORE7000: Analysis Mineral

ME-EXPLORE9000: Analysis Soil heavy metal elements

### ●Specification

- ◆ Analysis method: ED-XRF
- ◆ Detector: 25mm<sup>2</sup> , 0.3mil, SDD, resolution≥139eV
- ◆ Excitation source: 50KV/200uA micro-Ag target and end-window integrated X-ray tube and HV power supply
- ◆ Element range: all elements from Mg to U
- ◆ Measurement time:1-60 s
- ◆ Sample type: solid, liquid, powder
- ◆ Detection limit: down to ppm level
- ◆ Concentration range: 1ppm~99.99%
- ◆ Calibration method: Ag
- ◆ CPU:1 GHz
- ◆ Memory:1G, extended memory for 32G max. (standard 4G)
- ◆ Control:One-touch test,no need to select a specific test mode
- ◆ Ambient humidity: ≤90%
- ◆ Ambient temperature: -20℃~+50℃

## ME-WQF-530 FT-IR SPECTROMETER



Based on more than thirty years experience in FTIR R&D and manufacturing, we has launched a new type FTIR Spectrometer WQF-530 with fully independent intellectual property rights.

Adhering to consistent excellent quality and superior performance, the new model obtains the best balance between intelligence and convenient operation, advance performance and low operation and maintenance cost.

It is a good choice for basic science research analysis, production quality control, testing and detection in various fields.

- ◆ High sensitivity and stability
- ◆ Intelligent real-time monitoring of instrument status
- ◆ Multiple communication options
- ◆ Flexible and convenient testing
- ◆ Powerful software workstation

### • Specifications

Interferometer	Cube-corner Michelson interferometer
Beam splitter	Multilayer Ge coated KBr
Detector	Room temperature DLATGS module (standard) Temperature stabilized, high sensitivity DLATGS module (optional)
IR Source	High intensity, long lifetime, air-cooled IR source
Wavelength Range	7800cm <sup>-1</sup> ~350cm <sup>-1</sup>
Resolution	0.85 cm <sup>-1</sup>
Signal to noise ratio	Better than 20,000:1 (RMS value, at 2100cm <sup>-1</sup> ~ 2000cm <sup>-1</sup> or 2100cm <sup>-1</sup> ~ 2200cm <sup>-1</sup> , resolution: 4cm <sup>-1</sup> , detector: DLATGS, 1 minute data collection)
Wavelength Accuracy	±0.01 cm <sup>-1</sup>
Scanning Speed	Microprocessor control, different scanning speed selectable.
Software	Main FTOS Suite software workstation, compatible to all version Windows OS (standard); Various specialized functional software modules(optional)
Communication	Ethernet interface (standard) ; WIFI wireless communication (optional)
Data Output	Standard data format, report generation and output
Status Diagnosis	Power on self check, real-time tem. and humidity monitoring and reminders
Certification	FDA 21 CFR Part11 compliance, IQ/OQ/PQ (Optional)
Environmen	Temperature: 10℃ ~ 30℃, humidity: less than 70%
Power Supply	AC220V±22V, 50Hz±1Hz; AC110V (optional)
Dimensions & Weight	520 x 435 x 255mm, 24kg
Accessories	Transmission sample holder (Standard); Optional accessories such as gas cell, liquid cell, Defused/Specular Reflection, single/multi reflection ATR, etc.

## FT-IR Spectrometer



### • Features

- ◆ New type cube-corner Michelson interferometer features smaller size and more compact structure, providing higher stability and less sensitive to vibrations and thermal variations than conventional Michelson interferometer.
- ◆ Fully sealed damp and dust proof interferometer, adopting high performance, long lifetime sealing material and desiccator, ensures higher adaptability to the environment and increases accuracy and reliability in operation. Viewable window for silica gel enables easy observation and replacement.
- ◆ Isolated IR source and large space heat dissipation chamber design provides higher thermal stability. Stable interference is obtained without the need of dynamic adjustment.
- ◆ High intensity IR source adopts a reflex sphere to obtain even and stable IR radiation.
- ◆ Cooling fan stretch suspending design ensures good mechanical stability.
- ◆ Super wide sample compartment provides more flexibility to accommodate various accessories.
- ◆ The application of programmable gain amplifier, high accuracy A/D converter and embedded computer improves the accuracy and reliability of the whole system.
- ◆ The spectrometer connects to PC via a USB port for automatic control and data communication, fully realizing plug-and-play operation.
- ◆ Compatible PC control with user friendly, rich function software enables easy, convenient and flexible operation. Spectrum collection, spectrum conversion, spectrum processing, spectrum analyzing, and spectrum output function etc. can be performed.
- ◆ Various special IR libraries are available for routine search. Users can also add and maintain the libraries or set up new libraries by themselves.
- ◆ Accessories such as Defused/Specular Reflection, ATR, Liquid cell, Gas cell, and IR microscope etc can be mounted in the sample compartment.

### • Technical Specifications

Model	ME-WQF510A	ME-WQF520A
Spectral Range	7800 to 350 cm <sup>-1</sup>	
Resolution	Better than 0.85cm <sup>-1</sup>	Better than 0.5cm <sup>-1</sup>
Wavenumber Precision	±0.01cm <sup>-1</sup>	
Scanning Speed	5-step adjustable for different applications	
Signal to noise ratio	better than 15,000:1 (RMS value, at 2100cm <sup>-1</sup> , resolution: 4cm <sup>-1</sup> , detector: DTGS, 1 minute data collection)	
Beam splitter	Ge coated KBr	
Infrared Source	Air-cooled, high efficiency Reflex Sphere module	
Detector	DTGS	
Data system	Compatible computer	
Software	FT-IR software contains all routines needed for basic spectrometer operations, including library search, quantitation and spectrum export	
IR Library	11 IR libraries included	
Dimensions & Weight	54x52x26cm & 28kg	

## NIR Spectrophotometer



### ● Applications

Application field: liquid dope samples(gasoline, drink and milk, etc.)

Optical system: grating monochromator

Detector: InGaAs

Interface: RS232 serial port

### ● Features

Transmission NIR , mainly used for liquid samples qualitative and quantitative analysis, applies to gasoline, drinks, milk and other areas of nutrients, water chemistry and other physical properties of the rapid non-destructive analysis determination.

Single-channel whole spectrum scanning.

Easily updated.

Fast scan, wavelength calibrates time from 900nm to 1700nm less than 2 minutes.

Built in SCM technology, auto 0% and auto background subtraction.

### ● Specifications

Model	ME-S410
Wavelength Accuracy	±1nm
Wavelength Reproducibility	≤1nm
Wavelength Scanning Interval	4nm or 8nm or 16 nm
Absorbance Reproducibility	0.002A (at 0.4A)
S/N	≥ 103 (at 1500nm)
Scanning Time	≤ 2mins
Size	530*470*300 & 12kg
Standard Package	Main instrument 1PC Power cord 1PC Data processing software package 1PC RS-232C serial communication cable 1PC User manual 1PC Fuse (2A) 2PCS 1cm quartz square sample cell 1PC 1cm cell holder 1PC

## ME-F96PRO Fluorescence Spectrophotometer



### ● Applications

This method can provide information including excitation and emission spectrum, emission light intensity and measurement of life of emission light and polarization fluorescence etc. This method can provide a wide lineal range of working curve. It has becoming an important analytic method in the region of trace analysis. This method has been used in:

**Medical science and clinical analysis:** Clinical analysis of biological specimen.

**Pharmaceutical science and pharmacology:** Analysis of natural pharmaceutical products; Quality control of pharmaceuticals and research of pharmaceutical metabolites.

**Biochemistry:** Analysis of minute quantity of substances in biological body.

**Food industry:** Analysis of minute quantity of constituents in food.

**Pollution analysis:** Atmospheric pollution, environmental testing & food contamination analysis.

**Organic and inorganic chemistry:** Used in the trace analysis in case of those substances cannot be determined by absorption spectrophotometry.

### ● Features

- ◆ Two operate mode can choose: fluorescence intensity & luminous intensity. Fluorescence scanning, kinetic determination, quantity analysis could be done under fluorescence intensity mode.
- ◆ Support off-line mode and on-line mode. Under off-line mode, instrument's computer system offer the fluorescence intensity measurement, concentration direct reading, auto 0 adjustment, auto background subtraction and etc. Under on-line mode, we could use quality and quantity software to control data acquisition and analysis through USB2.0 interface.
- ◆ Provide optional PC qualitative and quantitative software package with expansible time scanning, wavelength scanning, graphic calculation and storage-access abilities.
- ◆ Optional accessories for different measurement, including single hole cell holder, fluorescence sample holder for different features, 200μl micro scale centrifuge tube, micro scale capillary sample holder, semi-auto sample introduction accessories, membrane sample accessories, powder sample accessories, jacket sample accessories and etc.

### ● Specifications

Model	ME-F96PRO
Exciting optical filters	Interference optical filter (10nm bandwidth)
Wavelength	365nm
Emission monochromator	C-T diffraction grating (Em 200-900nm)
Wavelength accuracy	±1nm
Wavelength repeatability	≤0.5nm
Sensitivity	S/N ≥ 150
Linearity deviation	≥0.995
Stability	better than 1.5%/10min
Display value	0.00-600.00
Power	220V±22V 50Hz±1Hz
Interface	USB2.0
Size	550*510*365(mm)&13kg

## VIS Spectrophotometer



### • Advantage

Single-chip microcomputer control, digital display, auto zero,100% adjustment function;  
Can be directly enter F factor and establish a standard curve for concentration direct-reading;  
Equipped with general parallel printer interface, measurement data can be printed;  
Directly input standard sample and the corresponding standard concentration value for concentration measurement;  
With USB interface, achieve more accurate and flexible measurement requirements via PC control (optional).

### • Specifications

Model	ME-V1100
Wavelength Range	325-1000nm
Band Width	4nm
Wavelength Accuracy	±2.0nm
Wavelength Repeatability	1nm
Photometric Display Range	-0.3-3A
Photometric Accuracy	±0.5% T
Photometric Repeatability	0.2% T
Photometric Mode	T,A,C,E
Stray Light	≤0.05% T (340nm NaNO <sub>2</sub> )
Stability	0.001A/30min@500nm
Wavelength Setting	Manual
Display Mode	4 LED display
Detector	Import Silicon Photodiode
Light Source	Import Tungsten Lamp
Power Requirement	AC 220V/50Hz 110V/60Hz
Power	120W
Dimensions(W*D*H)	36*28*19cm&9kg
Standard Accessory	Glass Cuvette 10mm * 4pcs ; Power line * 1pc; Dust cover* 1pc; Manual * 1pc; PC Software (Option)

## UV VIS Spectrophotometer



### • Advantage

Single-chip microcomputer control, LCD Screen (128\*64 Dots);  
Large LCD screen, can display multiple sets of data;  
Large memory space ,can store multiple sets of data and curve;  
Auto zero,100% adjustment function, Auto wavelength adjustment;  
Wrap lights,Auto filter changing, large sample pool (0.5mm ~ 100mm);  
Up to 10 standard sample for measure function of standard curve establish;  
Direct input K, B factor for quantitative measurement of standard curve;  
Can be directly input standard sample and the corresponding concentration values to establish the standard curve for quantitative measurement;  
Switch off power save standard curve parameter measuring set;  
Can be done any standard curve editor, convenient for use;  
With general parallel printer interface or printer interface, can print title bar, measurement data, curve of standard sample curve, and the curve;  
With USB interface;  
Achieve more accurate and flexible measurement with PC control (optional).

### • Specifications

Model	ME-UV1100	ME-UV1200
Wavelength Range	200-1000nm	
Band Width	4nm	2nm
Wavelength Accuracy	±2.0nm	±1.0nm
Wavelength Repeatability	0.2nm	
Photometric Display Range	-0.3-3A	
Photometric Accuracy	±0.5% T	
Photometric Repeatability	0.2% T	
Photometric Mode	T,A,C,E	
Stray Light	≤0.05% τ (220nm NaI, 340nm NaNO <sub>2</sub> )	
Stability	0.001A/30min@500nm	
Detector	Import Silicon Photodiode	
Light Source	Import Deuterium Lamp Tungsten Halogen Lamp	
Power Requirement	AC 220V/50Hz 110V/60Hz	
Dimensions(W*D*H)	46*33*21cm&11kg	
Standard Accessory	Glass Cuvette 10mm * 4pcs ; Quartz Cuvette 10mm * 2pcs Power line * 1pc; Dust cover* 1pc; Manual * 1pc; PC Software (Option)	



## UV VIS Spectrophotometer



### • Advantage

Single-chip microcomputer control, LCD Screen (128\*64 Dots);  
Large memory space ,can store multiple sets of data and curve;  
Auto zero,100% adjustment function, Auto wavelength adjustment;  
Wrap lights,Auto filter changing, large sample pool(0.5mm ~ 100mm);  
Up to 10 standard sample for measure function of standard curve establish;  
Direct input K, B factor for quantitative measurement of standard curve;  
Can be directly input standard sample and the corresponding concentration values to establish the standard curve for quantitative measurement;  
Switch off power save standard curve parameter measuring set;  
Can be done any standard curve editor, convenient for use;  
With general parallel printer interface or printer interface, can print title bar, measurement data, curve of standard sample curve, and the curve;  
With USB interface, with PC Software.

### • Software Features

Wavelength Scan: Sample can be 190-1100nm full band spectrum scan , can also be segmented scan  
Kinetic test: the time of the measured object scanning , timely detection of changes in concentration caused by changes in absorbance  
Quantitative test: Establish a standard curve,concentration can be measured in the analysis  
Multi- wavelength testing : set a plurality of wavelengths simultaneously , the measured absorbance of a plurality of wavelengths in the test  
DNA / protein test: the test formula purity of nucleic acid &protein concentration analysis of DNA /protein

### • Specifications

Model	ME-UV1300PC	ME-UV1500PC
Wavelength Range	190-1100nm	
Band Width	4nm	2nm
Wavelength Accuracy	±0.5nm	
Wavelength Repeatability	0.2nm	
Photometric Display Range	-0.3-3A	
Photometric Accuracy	±0.5% T	
Photometric Repeatability	0.2% T	
Photometric Mode	T,A,C,E	
Stray Light	≤0.05% τ (220nm NaI, 340nm NaNO <sub>2</sub> )	
Stability	0.001A/30min@500nm	
Detector	Import Silicon Photodiode	
Light Source	Import Deuterium Lamp Tungsten Halogen Lamp	
Power Requirement	AC 220V/50Hz 110V/60Hz	
Dimensions(W*D*H)	46*33*21cm&11kg	
Standard Accessory	Glass Cuvette 10mm * 4pcs ; Quartz Cuvette 10mm * 2pcs Power line * 1pc; Dust cover* 1pc; Manual * 1pc; Software * 1pc	

## UV VIS Spectrophotometer



### • Advantage

Used in biological research, bio-industry, pharmaceutical, pharmaceutical, teaching&research, environmental protection, food hygiene, clinical examination, health&epidemic prevention and other fields;  
5nm, 4nm, 2nm, 1nm, 0.5nm spectral bandwidth of 5 custom installation according to user requirements , to meet the stringent requirements of the Pharmacopoeia;  
LSI design greatly improves the scalability and reliability of the system; Store about 200 data;  
Rich measurement methods , with a wavelength scan , time scan , multi-wavelength determination , multi-order derivative determination (optional ) , dual-wavelength , three-wavelength (optional ) DNA protein measurements (optional ) , and other measurement methods to meet different measurement requirements , and can be displayed directly on a 6- inch screen;  
Based on user requirements optional hole rack , manual four with stand , manual Eighth rack , automatic Eighth frame, glass stand , test tube rack , 1cm colorimetric frame , 5cm colorimetric frame , 10cm colorimetric racks;  
Measurement data can be output through the printer with USB interface;  
Can be powered down to save the measurement parameters and data , user-friendly, with PC Software.

### • Specifications

Model	ME-UV1700PC
Wavelength Range	190-1100nm
Band Width	1.8nm
Wavelength Accuracy	±0.3nm
Wavelength Repeatability	≤0.01nm
Photometric Display Range	-0.4-4A
Photometric Accuracy	±0.3% T(0-100%T)
Photometric Repeatability	0.15% T(0-100%T)
Photometric Mode	T,A,C,E
Stray Light	≤0.03% τ (220nm NaI, 340nm NaNO <sub>2</sub> )
Stability	0.0005A/h@500nm
Detector	Import Silicon Photodiode
Light Source	Import Deuterium Lamp; Tungsten Halogen Lamp
Power Requirement	AC 220V/50Hz 110V/60Hz
Dimensions(W*D*H)	56*45*23cm&28kg
Baseline Flatness	± 0.001A
Noise	± 0.0002A @500nm
Standard Accessory	Glass Cuvette 10mm * 4pcs ; Quartz Cuvette 10mm * 2pcs Power line * 1pc; Dust cover* 1pc; Manual * 1pc; Software * 1pc

## Double Beam UV VIS Spectrophotometer

### • Advantage

Double beam optical system; 8 inch color touch-screen

Automatic zero and full scale adjustment

Equipped with USB interface

Optional : UV WIN8 Spectrum data processing software / Thermal plotter

### • Main Features

Adopt blazed holographic gratings. Have outstanding test precision and very competitive price. Cutting-edge user interface, powerful functions, and easy operation. With powerful functions, the equipment shows great performance in qualitative and quantitative testing , such as :

- ◆ Full spectrum scanning
- ◆ Detailed spectrum scanning
- ◆ Time-based kinetics determination
- ◆ Multi-wavelength measurement
- ◆ Linear regression
- ◆ Concentration direct reading
- ◆ Peak/Valley detecting
- ◆ GOTO  $\lambda$

Design with sophisticated power protection system. With high capacity of internal memory, can store test results, scanned images, regression equations and correction data. Therefore, it follows a fast initialization when turn on. Can be connected with dedicated printer, which can print testing results, or draw curve from spectral scanning, fixed wavelength time-based scanning, and liner refrasson. Can be connect to a PC , which can not only enhance the performance in data testing and spectrum scanning, but also expand the memory to save more testing results.

### • Specifications

Model	ME-UV1800
Monochromator type	Czerny turner
Focal length	160mm
Wavelength Range	190-1100nm
Band Width	1.8nm
Wavelength Accuracy	$\pm 0.3\text{nm}$
Wavelength Repeatability	$\leq 0.01\text{nm}$
Photometric Display Range	0.0-200 .0% T / -0.301-4.000 A / 0.000-9999 C
Photometric Accuracy	$\pm 0.3\%$ T(0-100%T) / $\pm 0.002\text{A}$ (0-0.5A) / $\pm 0.004\text{A}$ (0.5A-1A)
Photometric Repeatability	0.15% T(0-100%T) / $\pm 0.001\text{A}$ (0-0.5A) / $\pm 0.002\text{A}$ (0.5A-1A)
Photometric Mode	T,A,C,E
Stray Light	$\leq 0.03\%$ $\tau$ (220nm NaI, 360nm NaNO <sub>2</sub> )
Stability	0.0005A/h@500nm
Detector	Import Silicon Photodiode
Scanning speed	Fast-medium-slow
Power Requirement	AC220V $\pm 22$ 50Hz $\pm 1\text{Hz}$ ,200W
Dimensions(W*D*H)	74*63*45cm&35kg
Baseline Flatness	$\leq 0.002\text{A}$ (200-1090nm)
Grating	1200 lines/mm
Drifting	$\leq 0.0009$ Abs/30min(250nm and 500nm after 2h warm up)
Noise	100%(T) $\leq 0.15\%$ (T); 0%(T) $\leq 0.1\%$ (T)
Standard Accessory	Quartz Cuvette 10mm*2pcs; Power line; Fuse * 2pcs; Manual ; Software



## Flame Photometer

### • Features

7-inch color touch screen

Pre-selection of flame sizes

Flame out protection device

Measuring range changing

Concentration units selectable

Multilingual user interface

Air compressor provide

Direct concentration display (Don't cover FP640)

Automatic calculate of correlation coefficient (Don't cover FP640)

### • Specifications

Model	ME-FP6450	ME-FP6440	ME-FP6431	ME-FP6430	ME-FP6410	ME-FP640
Display value	Concentration value					Optical power
Data range	0.000~999.9				000.0~999.9	0000~9999
Channel Q'ty	5	4	3		2	
Range ppm	K	0~100				
	Na	0~160				
	Li	0~100	/	0~100	/	/
	Ca	0~1000		/	/	/
	Ba	0~3000	/	/	/	/
LOD ppm	K	0.01				
	Na	0.01				
	Li	0.1	/	0.1	/	/
	Ca	2		/	/	/
	Ba	6	/	/	/	/
Linear error	K	0.195				
	Na	0.69				
	Li	0.15	/	0.15	/	/
	Ca	3		/	/	/
	Ba	9	/	/	/	/
Response time	<8s					
Sample uptake	<6ml/min					
Stability	<3% drift over 15s when continuously aspirating					
Reproducibility	<3% coedddicient of variation for 7 consecutive samples					
Curve graph	Display				/	/
Printer	Optional build-in thermal printer					/
COM	USB					
fUEL	LPG					
Power	AC220V $\pm 22\text{V}$ ; 50Hz $\pm 1\text{Hz}$ , 250W					
Packing size	780*560*390mm , 0.17CBM , 18KGS					



## Viscometer



### ● Application

Widely used in all need to rapid determination of viscosity in the industry, such as chemical, pharmaceutical, textile, agriculture, forestry and agricultural, dairy, food, paper making, etc used for determination of drugs, food, food, feed, resin, plastic, rubber, oil, minerals, seeds, dehydrated vegetables, starch, tea, tobacco, graphite, paint, dyes and other items.

### ● Feature

- (1). The measurement data is directly displayed on the LCD panel without secondary calculation.
- (2). Optional temperature probe, the real time measurement by testing the temperature of the sample.
- (3). Automatic scanning, the instrument can automatically recommend the best combination of rotor and the rotating speed.
- (4). Automatically display the selected combination can measure the rotational speed of rotor and the largest range of viscosity.
- (5). Optional data processing software, real-time record viscosity, speed, rotational speed or the rotor (shear rate) follow the difference of the temperature changes.

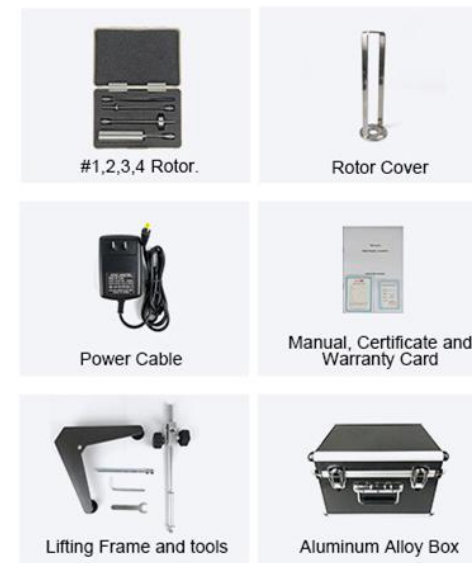
### ● Technical Specifications

Model	ME-NDJ-5S	ME-NDJ-8S
Measuring Range	0.1~100,000 mPa.s	0.1~2,000,000 mPa.s
Rotate Speed (r/min)	6 / 12 / 30 / 60	0.3/0.6/1.5/3/6/12/30/60
Rotor	1#,2#,3#,4#(Measuring<10 viscosity, needs to be equipped with 0# rotor)	
Measuring Error(Newtonian liquid)	±1%	
Repeatability error(Newtonian liquid)	±0.5%	
Data Output	RS232C & USB	
Power	110V ~240V , 50Hz / 60Hz	
Size & Net Weight	350 *350 *450mm & 7kg	

## PRODUCT ACCESSORY



### STANDARD ACCESSORY



### OPTIONAL ACCESSORY





## Touch Screen Viscometer

### • Introduction

Touch Screen Rotational Viscometer with stylish and modern high technology, which can measure the viscosity quickly and accurately.

### • Main Features

1. It with 30pcs measuring progress, save 30pcs testing result data, which can help users get the Viscosity and related datas of the sample quickly and accurately.

2. 5 inch color touch-screen, which can show many specifications and working condition, make the operate more easier and intuitive.

Using ARM technology, built-in Linux system, user interface is simple and clear, through analysis program creating and testing data analysis, quickly and easily test the viscosity.

Viscosity test is accurate, each measuring range is computer self-calibration, high precision, and avoid error.

Display: viscosity, temperature, shear rate, shear stress, testing value full fill measuring value percentage, measuring range overflow alarm, auto-scan, the maximum measuring range of current combined rotors speed, date, time, and it can show kinematic viscosity at a known density situation, great to meet users' different requirements.

With timing Measurements function, and Temperature Probe Interface.

It can show the curve, printing data.

Prepositive level meter, level adjustment, easy and intuitive.

Optional accessories: Temperature probe, thermostatic water bath, thermostatic cups, printer, standard viscosity sample (standard silicone oil), etc.

### • Specifications

Model	ME-NDJ-5T	MEINDJ-9T	ME-NDJ-8T	ME-SNB-2T
Rotating speed (r/min)	3/6/12/30/60		0.3/0.6/1.5/3/6/12/30/60	0.1/0.3/0.6/1.5/3/6/12/30/60
Measuring range (mPa.s)	1~100000		1~2000000	1~6000000
	optional accessory: 0# rotor for sample viscosity is less 10mPa.s			
Rotor	1-4# rotors (Standard); 0# rotors (optional)			
Measuring error (Newtonian liquids)	±1%	±0.5%	±1%	±1%
Repetitive error (Newtonian liquids)	±0.5%	±0.25%	±0.5%	±0.5%
Timer function	yes	yes	yes	yes
Power	110V~240V, 50Hz / 60Hz			
Size and weight	350 *350 *450mm & 7kg			



### • Application

Widely used in a variety of fluid which need to measure the viscosity and the fluid under high temperature melting, such as the paints, coatings, cosmetics, inks, paper pulp, food, oil, starch, solvent-based glue, latex, and other biochemical products, and some items need for high-temperature melting, such as asphalt, wax, hot melt adhesives, etc.

PRODUCT INTERFACE

Main Menu

Viscosity Test Menu

Test Parameter Setting

Test Interface

Print Preview Interface

Automatic Scanning

Coordinate Interface

## DV Series Touch screen Viscometer



### ● Main features

1. Adopt ARM technology, built-in Linux system. The operation interface is simple and clear, through the creation of test program and data analysis, the viscosity test is carried out quickly and conveniently.

2. The viscosity test value is accurate : each measuring range is automatically calibrated by a computer , the precision is high , and the error is small ;

3. Display is rich: in addition to viscosity (dynamic viscosity and kinematic viscosity), there are also temperature, shear rate, shear stress, measurement value as a percentage of the full

range value (graphic display, range overflow alarm, automatic scanning, Maximum measurement range, date, time and so on under current rotor speed combination. Show kinematic viscosity when density is known.

4. Complete functions: timing measurement, self-built 30 groups of test programs, access to 30 groups of measurement data, real-time display of viscosity curves, printing data and curves;

5. Front level: level adjustment is intuitionistic and convenient;

6. Stepless speed regulation:

ME-RVDV-1T series: 0.3-100 rpm, a total of 998 rotational speeds

ME-RVDV-2T series: 0.1-200rpm, 2000 revolutions

7. Showing the curve of shear rate versus viscosity : the range of shear rate can be set , and displayed on the computer in real time ;Curve of time - to - viscosity can also be displayed

8. Optional Pt100 temperature probe: wide temperature range, ranging from -20 °C to 300 °C, and measuring precision 0.1 °C;

9. Optional accessories rich: ULR Low viscosity spindle , temperature sensor, viscometer special thermostat bath, thermostat cup, printer, standard viscosity sample (standard silicone oil), etc.:

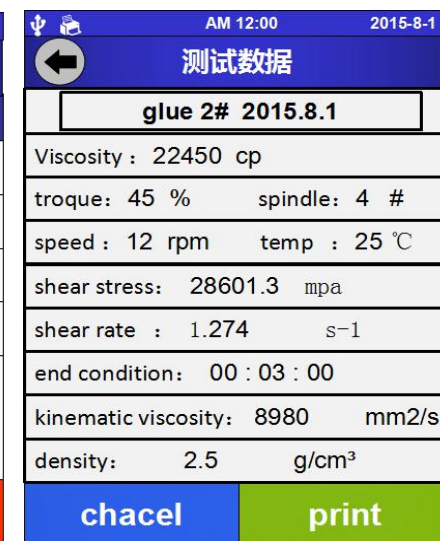
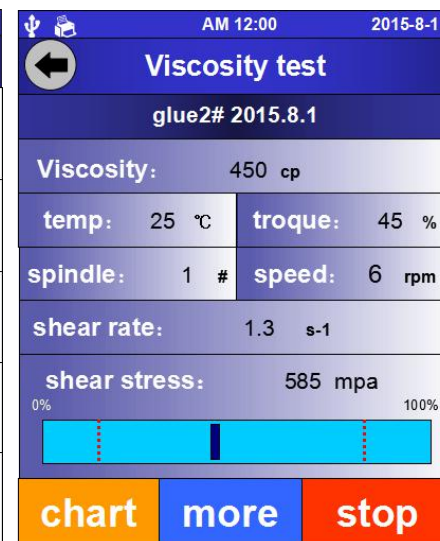
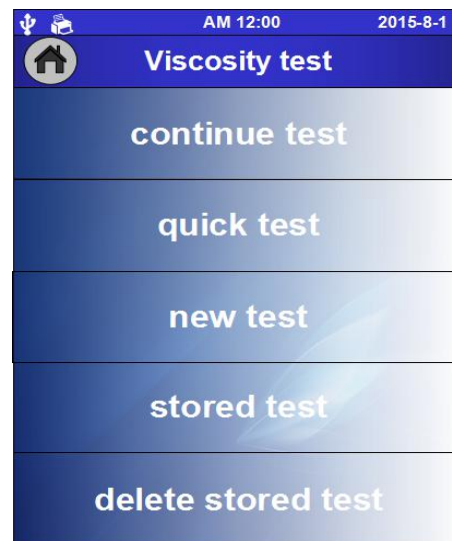
The measurable range is very large, ranging from 100 to 320 million MPA.

Widely used in paint, paint, cosmetics, ink, pulp, food, oil, starch, solvent adhesive, latex, biochemical products and other high viscosity industries.

### ● Detailed technical parameters:

Model	ME-RVDV-1T	ME-HADV-1T	ME-HBDV-1T
Control / display mode	5-inch color touch screen		
Speed(r/min)	0.3–100 infinitely variable speed , a total of 998 speed options		
Measuring range mPa.s	100-13 million	200-26 million	800-104 million
	(Measure viscosity below the lower limit, need to choose R1 rotor)		
Rotor	R2 – R7(standard) Optional : ULR(Low viscosity spindle )		
Sample dosage	500ml		
Measurement error (Newtonian liquid)	±1%		
Repetition error (Newtonian liquid)	±0.5%		
Display shear response / Shear rate	standard configuration		
Timing function	standard configuration		
Display viscosity curve	shear rate - viscosity		
	Temperature-viscosity		
	Time-viscosity		
Kinematic viscosity	Density of sample to be input		
Temperature measurement	Standard temperature probe interface (need to select temperature probe)		
Autoscan	Automatically scan and recommend the best combination of rotor and speed		
Maximum measurement range	Automatic display of the selected combination of rotors and rotational speeds in a measurable range of viscosity		
Self-built measurement program	Save up to 30 groups (including rotor, speed, temperature, time, etc.)		
Preservation of measurement results	Up to 30 sets of data can be stored (including viscosity, temperature, rotor speed, shear rate, shear stress, time, density, kinematic viscosity, etc.)		
Print	Data, curves (marked with print interface, printer to be purchased)		
Data output interface	RS232		
Constant temperature component	Selection (all kinds of viscometer special constant temperature slot, constant temperature cup)		
Source	Wide voltage work (110V / 60Hz or 220V / 50Hz)		
Outline dimension	300 × 300 × 450 mm)		

Model	ME-RVDV-2T	ME-HADV-2T	ME-HBDV-2T
Control / display mode	5-inch color touch screen		
Speed(r/min)	0.1–200 infinitely variable speed , a total of 2000 speed options		
Measuring range mPa.s	100-40 million	200-80 million	800-320 million
	(Measure viscosity below the lower limit, need to choose R1 rotor)		
Rotor	R2 – R7(standard) Optional : ULR(Low viscosity spindle )		
Sample dosage	500ml		
Measurement error (Newtonian liquid)	±1%		
Repetition error (Newtonian liquid)	±0.5%		
Display shear response / shear rate	standard configuration		
Timing function	standard configuration		
Display viscosity curve	shear rate - viscosity Temperature-viscosity Time-viscosity		
Kinematic viscosity	Density of sample to be input		
Temperature measurement	Standard temperature probe interface (need to select temperature probe)		
Autoscan	Automatically scan and recommend the best combination of rotor and speed		
Maximum measurement range	Automatic display of the selected combination of rotors and rotational speeds in a measurable range of viscosity		
Self-built measurement program	Save up to 30 groups (including rotor, speed, temperature, time, etc.)		
Preservation of measurement results	Up to 30 sets of data can be stored (including viscosity, temperature, rotor speed, shear rate, shear stress, time, density, kinematic viscosity, etc.)		
Print	Data, curves (marked with print interface, printer to be purchased)		
Data output interface	RS232		
Constant temperature component	Selection (all kinds of viscometer special constant temperature slot, constant temperature cup)		
Source	Wide voltage work (110V / 60Hz or 220V / 50Hz)		
Outline dimension	300 × 300 × 450 mm)		





## Halogen Moisture Analyzer

### ● Introduction

Display: LCD display

Drying technology: Ring halogen lamp

Temperature range: RT to 160℃

Interface: RS232

Pan diameter: Φ90mm

Power supply: 110v/220v ±10% , 50/60±1Hz

Packing dimensions: 37\*33\*21.5&10KG ( Net weight : 6KG)

Function: Moisture, drying weight percent, ATRO drying weight,ATRO moist weight.



### ● Specifications

Model	ME-H220	ME-H550	ME-H250	ME-H150	ME-H5100	ME-H2100	ME-H1100
Moisture Range	0-100%						
Max. Weight	20g	50g			100g		
Reading accuracy	2mg	5mg	2mg	1mg	5mg	2mg	1mg
Moisture Readability	0.01%	0.02%	0.01%	0.01%	0.02%	0.01%	0.01%
Moisture Accuracy	0.01%						
Moisture Reproducibility	0.1%	0.2%	0.1%	0.1%	0.2%	0.1%	0.1%
Heat Time range	1-99min						
Tem. Accuracy	1℃						
Display items	Before dry in weight,after-drying weight ,the method of ending,the remaining time of heating ( min), heating temperature,driage, drying rate,moisture weight rate,moisture regain rate						

## Portable Digital Moisture Meter



### ● Introduction

ME-HK90 Portable Digital Moisture Meter, which is specially designed to be needle type .It Adopts the single chip computer chip technology and the 7 groups fixed gear, internal calibration error automatically by the software. The Blocks added the standard testing .

### ● Application

This moisture meter can measure all kinds of wood, paper, cardboard, corrugated carton of moisture. Suitable for fiber material, moisture content in 3.0-40% of the objects, such as bamboo, wood, Chinese traditional medicine, tobacco, cotton, paper, leather, textile, food, agricultural, chemical raw materials such as items, however the rapid determination of moisture content.

### ● Specifications

Model	ME-HK-90
Display	LED
Adjustable type	7
Resolution	≤ 10%: 0.1%; more than10%:1%
Measurement Range	3.0～40%
Power	Battery
Size & Weight	128*61*24mm&150g

## Grain Moisture Meter



### ● Feature

- \* Fast, accurate and convenient
- \* Both AC-DC power supply
- \* LCD with white backlight, clear and bright
- \* Multi-point calibration, error correction
- \* Low power consumption, auto power off, energy saving, energy-saving
- \* Automatic weighing and temperature compensation
- \* Translated density display, moisture mean value calculation
- \* Measured object: grain and other nonmetal particle samples such as paddy, wheat, corn, bean, rapeseed vegetable seeds etc.

### ● Technical Specifications

Model	LDS-1G
Measure Range	3%~35%
Measure Time	≤10s
Measure Error	≤±0.5% (main moisture range)
Repetitive error	≤0.2%
Ambient temperature range	0~40℃
Net weight	830g
Power	four alkaline battery (5# 1.5V) or external 9V DC barostat

## Manual Polarimeter



Easy-to-use manual polarimeter, measuring range from -180 to +180 degrees.  
The instrument is suitable for measuring the optical rotation of optically active substances.  
Accuracy: 0.05 degrees.

### ● Features

ME-WXG-4 manual polarimeter is equipped with a 589nm sodium lamp.  
Switch on the power, the polarized light beam immediately radiate to polarizer filter.  
You can observed distinct visual fields through eyepiece.  
Put the sample tube into the measuring field chamber, rotate the vernier knob, you will find an equal brightness.  
Reading and recording the measured value from vernier scale, the testing is completed.

#### ● Application

- Research and education
- Food and sugar industry
- Chemical and pharmaceutical industry
- Other industrial applications

### ● Specifications

Model	ME-WXG-4
Measuring Range	-180°~180°
Scale Value	1°
Vernier	0.05°
Magnifier	3X
Light Source	Sodium Lamp
Wavelength	589.44nm
Test Tube	50/100/200mm
Power Requirements	220V/50Hz
Dimensions	500(L)×135(W)×330(H)mm &5kg

## Portable Refractometer

### • Introduction

It is developed for working with liquids, help monitor and control concentrations in foods and beverages, etc. Refractometer provide critical information to ensure product quality. Full ranges of measurement is available.



### • Technical Specifications

	Model	Range	Min. Scale Value
Brix	ME-110ATC	0-5%	0.10%
	ME-111ATC	0-10%	0.10%
	ME-112ATC	0-20%	0.10%
	ME-113ATC	0-32%	0.2%
	ME-114ATC	28-62%	0.2%
	ME-115ATC	45-82%	1%
	ME-116ATC (honey )	58-90% Brix; 10-33%Water; 38-43	1%
	ME-1150ATC	0-50%	0.5%
	ME-117ATC (honey )	58-92%	0.5%
	ME-118ATC	0-80%	0.5%
	ME-119 ATC	0-90%	0.5%
Soya Milk	ME-612ATC	0-20%	0.2%
	ME-613ATC	0-25% ; 0-32% Brix	0.5%; 0.2% Brix
Salinity	ME-211ATC	0-100‰,1.000~1.070sg	0.10%,1.000-1.070%
	ME-212ATC	0-28%	0.20%
	ME-213ATC	0-10% Brix, 0-100‰ Salinity	0.20% Brix, 1% Salinity 1.001 specific gravity
	ME-214ATC	0-32% Brix, 0-28% Salinity	0.20% Brix, 0.1% Salinity

	Model	Range	Min. Scale Value
Clinical protein	ME-311ATC	SP:0-12g/dl ; U.G:1.000-1.050	0.2g/dl; 0.0005ND
	ME-312ATC	SP:0-12g/dl ; U.G:1.000-1.050 nD:1.3330-1.3600	0.2g/dl; 0.002sg 0.0005ND
Battery / Antifreeze / Cleaning Fluid	ME-413ATC	E:-84°F~32°F (0~70%) ; P:-60°F~32°F (0~63%) ; B:1.100~1.400sg	5°F; 5°F; 0.01sg
	ME-414ATC	B:1.100-1.400sg; E: -50°C-0°C P: -50°C-0°C; C: -40°C-0°C	0.01sg;1°C; 1°C; 5°C
	ME-415ATC	D: 0-100% ; E: -60°C-0°C B:1.100-1.400sg	5°C; 5°C; 0.01sg
	ME-417ATC	E:-70°C~0°C; P:-60°C~0°C; B:1.100~1.400sg	1°C; 1°C; 0.01sg
AdBlue	ME-501ATC	Car Urea: 30% - 35% Glycol: -50°C--0°C Propanediol: -50°C--0°C	0.5%; 5°C; 0.01sg
	ME-502ATC	Car Urea: 0-40%	Car Urea: 0.2%
Alcohol	ME-511ATC	0-60%, 60-80% V/V	1%, 2%
	ME-512ATC	0-25% VOL ; 0-40 Brix	0.20% ;0.20%
	ME-513ATC	0-25% VOL	0.2%
	ME-514ATC	0~25% VOL, 0~20°Baume'	0.2%; 0.2%
Beer Brewing	ME-515ATC	0-32% Brix; 1.000-1.120 Wort SG	0.20% Brix; 0.001
Oe Refractometer for Wine	ME-701ATC	0-140 Oe ; 0-25KMW(Babo) 0-32%Mas Sacch	1 Oe; 0.2KMW(Babo); 0.2%Mas Sacch
	ME-703ATC	30-140 Oe ; 0-32% Brix	1 Oe ; 0.20% Brix
	ME-705ATC	0~190°Oe; 0~38°KMW Babo; 0-44% Brix	2° Oe ; 0.4°KMW(Babo); 0.4% Brix
Emulsion Concentration	ME-811ATC	0-15% MDT ; 1000-1040sg	0.5%;
		0-15% MDT ; 1000-1050sg	0.5%



## Portable Digital Refractometer



### ● Features

With ATC, and Compensation temperature range: 0°C-50° C.

This product used for the rapid determination of the sugar solution and the concentration of other non-sugar solution, widely used in sugar refining, food and beverage industries and agricultural production and scientific research.

Suitable for soy sauce, ketchup and other sauces (seasonings) product concentration measurement, jam, syrup, liquid sugar and various fruit sugar Brix measurement points more products, fruit juices, soft drinks and carbon acid beverage production line , quality management, pre-delivery inspection. From planting to fruit process, this product can accurately measure the harvesting period and help the sweetness of classification . In addition, it can test the concentration of the textile industry of the slurry was measured, and the weight percentage concentration detection oil industry, include : the water-soluble cutting fluid (cutting oil), emulsions, grinding fluids, drawing oil, tapping oil, cutting fluids, release agents. Apply to manage cleaning of metal machine parts with degree of dirty cleaning liquid.

### ● Specifications

Series	Model	Scales	Range	Resolution	Accuracy
Brix	ME-DR101	Brix	0.0-50.0%	0.1%	±0.2%
		Refractive Index	1.3330-1.4200nD	0.0001nD	±0.0003nD
	ME-DR102	Brix	0.0-90.0%	0.1%	±0.2%
		Refractive Index	1.3330-1.5177nD	0.0001nD	±0.0003nD
	ME-DR103	Dextran	0.0--10.6%	0.1%	±0.2%
		Refractive Index	1.3330-1.4200nD	0.0001nD	±0.0003nD
Honey	ME-DR301	Brix	0.0--90.0%	0.1%	±0.2%
		Water	38.0%-5.0%	0.1%	±0.2%
		Be'	33.0-48.0	0.1	±0.2
		Refractive Index	1.3330--1.5177nD	0.0001nD	±0.0003nD
Clinical	ME-DR501	URINE SP. G.	1.000-1.050	0.001	±0.002
		SERUM P.	-0.1-12.0	0.1	±0.2
		Refractive Index	1.3330--1.3900nD	0.0001nD	±0.0003nD

Series	Model	Scales	Range	Resolution	Accuracy
Salinity	ME-DR201 (sodium chloride (NaCl))	Salinity	0.0--28.0%	0.1%	±0.2%
		Salinity	0--280‰	1‰	±2‰
		Specific Gravity	1.000-1.217	0.001	±0.002
		Refractive Index	1.3330--1.3900	0.0001nD	±0.0003n
	ME-DR202 (sea water)	Salinity	0--100‰	1‰	±2‰
		Chlorinity	0--57‰	1‰	±2‰
		Specific Gravity	1.000-1.070	0.001	±0.002
		Refractive Index	1.3330--1.3530	0.0001nD	±0.0003n
Wine	ME-DR401	Brix	0.0-45.0%	0.1%	±0.2%
		%VOL ap	0.0-22.0%	0.1%	±0.2%
		Oe	3-150	1	±2%
		KMW	0.0-25.0	0.1	±0.2
Wine/ Beer	ME-DR402	Brix	0.0-50.0%	0.1%	±0.2%
		specific gravity	1.000-1.130	0.001	±0.002
Car	ME-DR601	Cleaner	(0)-(-40)°C	0.1°C	±0.5°C
		Ethylene Glycol	(0)-(-50)°C	0.1°C	±0.5°C
		Propylene Glycol	(0)-(-50)°C	0.1°C	±0.5°C
		Battery	1.000-1.500sg	0.001	±0.005sg
	ME-DR602 (Urea Tester)	Urea (NH <sub>2</sub> ) <sub>2</sub> CO	0-51.0%	0.1%	±0.2%
		Refractive Index	1.3330--1.4056	0.0001nD	±0.0003n
	ME-DR603 (Engine Coolant Tester)	Ethylene	0-100%	0.10%	±0.5%
		Ethylene	(0)-(-50)°C	0.1°C	±0.5°C
		Propylene Glycol	0-100%	0.10%	±0.5%
		Propylene	(0)--(-60)°C	0.1°C	±0.5°C
	ME-DR604 (Brake Fluid Tester )	DOT3	(121)-(260)°C	1°C	±10°C
		DOT3 HT	(121)-(299)°C	1°C	±10°C
		DOT4	(125)-(275)°C	1°C	±10°C
		DOT4 Plus	(150)-(275)°C	1°C	±10°C

## Portable Digital Refractometer

### • The Parameters of Items

Measurement Temperature: 0~40℃ (ATC)

Measurement Time: 2S

Protection Class: IP67

Environment Temperature: 0~40℃

Sample Volume Needed: > 0.4ml

Power Supply: 18650 rechargeable battery

Dim/G.W: 180(L)\*100(W)\*55(H), 365g



### • Specifications

Series	Model	Scales	Range	Resolution	Accuracy
Brix	ME-MDR102	Brix	0.0-94.0%	0.1%	±0.1%
		Refractive Index	1.3330-1.5290nD	0.0001nD	±0.0002nD
Salinity	ME-MDR201 (sodium chloride (NaCl))	Salinity	0.0--28.0%	0.1%	±0.1%
		Salinity	0--280‰	1‰	±1‰
		Specific Gravity	1.000-1.217	0.001	±0.001
		Refractive Index	1.3330--1.4200nD	0.0001nD	±0.0002nD
	ME-MDR202 (sea water)	Salinity	0--100‰	1‰	±1‰
		Chlorinity	0--57‰	1‰	±1‰
Honey	ME-MDR301	Specific Gravity	1.000-1.070	0.001	±0.001
		Refractive Index	1.3330--1.4200nD	0.0001nD	±0.0002nD
		Brix	0.0--94.0%	0.1%	±0.1%
		Water	38.0% -5.0%	0.1%	±0.1%
Wine	ME-MDR401	Be'	33.0-48.0	0.1	±0.1%
		Refractive Index	1.3330--1.5290nD	0.0001nD	±0.0002nD
		Brix	0.0-50.0%	0.1%	±0.1%
		%VOL ap	0.0-22.0%	0.1%	±0.1%
Clinical	ME-MDR501	Oe	0-150	1	±1%
		KMW	0.0-25.0	0.1	±0.1%
		URINE SP. G.	1.000-1.050	0.001	±0.001
		SERUM P.	-0.1-12.0	0.1	±0.1
Car	ME-MDR601	Refractive Index	1.3330--1.4200nD	0.0001nD	±0.0001nD
		Cleaner	(0)---(-60)℃	0.1℃	±0.3℃
		Ethylene Glycol	(0)---(-60)℃	0.1℃	±0.3℃
		Propylene Glycol	(0)---(-70)℃	0.1℃	±0.3℃
	ME-MDR602 (Urea Tester)	Battery	1.000—1.500sg	0.001	±0.003sg
		Urea (NH <sub>2</sub> ) <sub>2</sub> CO	0-51.0%	0.1%	±0.1%
	ME-MDR603 (Engine Coolant Tester)	Refractive Index	1.3330--1.4200nD	0.0001nD	±0.0002nD
		Ethylene Glycol	0-60%	0.1%	±0.3%
		Ethylene Glycol (℃)	(0)---(-60)℃	0.1℃	±0.3℃
		Propylene Glycol	0-70%	0.10%	±0.3%
	ME-MDR604 (Brake Fluid Tester )	Propylene Glycol (℃)	(0)---(-70)℃	0.1℃	±0.3℃
		DOT3	(121)---(260)℃	1℃	±3℃
		DOT4	(125)---(275)℃	1℃	±3℃
		Refractive Index	1.3330--1.5290nD	0.0001nD	±0.0002nD

Whiteness Meter



● Application

The principle of photoelectric effect & D65 light source (R457) and 45/0 as a illumination condition. Mainly applied to white or almost white whiteness measurement on the surface of the object or powder.

Can be accurately obtained is consistent with the visual sensitivity of whiteness value.

For paper opacity can be measured accurately. Except liquid sample.

The instrument can be widely used in powder, board, paste, sheet, textile printing and dyeing, paint coating, chemical building materials, paper, cardboard, plastic, white cement, ceramic, enamel, porcelain clay, talc powder, starch, wheat flour, salt, detergent, cosmetics and other objects of whiteness measurement.

● Characteristics

Compact in size, novel in design & LCD display with suitcase package..

Succinct operation, suitable measurement range & higher performance.

Low daft, high accuracy, nice stability ensure long-time & stable running.

Unique positioning structure & high precision optical system effectively guarantee measuring values accuracy and repeat-ability.

Lower consumption and AC & DC power supply convenience for operate outside.

With low voltage indication function remand of users replace battery timely.

With data output interface.

● Specifications

	Portable	Bench Top
Model	ME-WSB-1	ME-WSB-2
Measure Range	0-199	
Measure Condition	Comply with GB/T3978 45/0	
Measure System	R457 Blue Light Whiteness	
Minimum Readout	0.1	
Measure aperture	φ15	φ30
Zero drift	≤0.2/10min	
Basic Error	≤0.3/3min	
Repeatability	≤0.3 2	
Environment Tem.	+ 5℃ ~ + 35℃	
Relative humidity	≤85%RH	
Power Supply	Ac/dc. or battery	Ac 220 v / 50 hz
Size & Weight	345*385*170mm & 1.5 kg	325*265*280mm&6.5KG

Model	ME-WSB-X
Measuring range	0-180
Measuring method	d/o
Repeatability	≤0.1
Indication drift	≤0.1
Dimension	220*295*375mm&10kg
Zero drift	≤0.1
Indication error	≤0.5
Working temperature	(0-40)℃, RH<80%
Power supply	0.2A, AC ( 220±22 ) V, 50Hz



## Portable Colorimeter



### ● Application

The colorimeter is widely used in plastic, metal, electronic, paint, ink, textile, garment, printing and dyeing, food, medical, cosmetic, automotive, toy...industries. It with the advantages:

Built-in white plate parameters: No need to calibrate each time which realize rapid measurement.

New Integrating Sphere Optical Path Design: Eliminating the stray light of main optical path and auxiliary optical path. Having the advantages of the highest measurement stability and precision.

Equipped with rechargeable high-capacity Li-ion battery.

Configure CQCS3 software: Connect PC computer to realize more functions.

Cross Platform Measuring Aperture & Small Area Measuring Aperture

### ● Specifications

Model	ME-NR110
Illuminating /Viewing Geometry	8/d
Measuring Aperture	Φ4mm
Detector	Silicon photoelectric diode
L <sup>*</sup> Cating	Illuminating L <sup>*</sup> Cating/Cross L <sup>*</sup> Cating
Double Measurement End Face	Large stable end face and small concave-convex end face
Color Space	CIEL*a*b*C*h* CIEL*a*b* CIEXYZ
Color Difference Formula	$\Delta E^*ab$ $\Delta L^*a^*b^*$ $\Delta E^*C^*h^*$
Light Source	D65
Light Source Device	LED blue light excitation
Errors Between Each Equipment	$\leq 0.80\Delta E^*ab$
Storage	100pcs standards 20000pcs samples
Repeatability	Standard deviation within $\Delta E^*ab$ 0.08; Average °F 30 measurements °F standard white plate
Packing Dimension	450*230*370 mm & 2.5KG
Power source	Rechargeable lithium-ion battery 3.7V@3200mAh
Lamp Life	5 years, more than 1.6 million measurements
Charging Time	8 hours--100% electricity
PC software	CQCS3 software
Printer (optional)	Miniature thermal printer

## Portable Colorimeter



### ● Application

The colorimeter is widely used in plastic, metal, electronic, paint, ink, textile, garment, printing and dyeing, food, medical, cosmetic, automotive, toy...industries. It with the below advantages:

Leading Humanity Design and Convenient Operation: One-touch access to measurement interface; Structure design in line with ergonomics

Stable Measurement Performance : The repeat-ability  $\Delta E$  is 0.08.; Portable structure design is more conducive to keeping the instrument stable when using.

Convenient and Fast Locating: Illumination locating is a fast, simple and convenient locating

PC Software—Realize More Function Expansion: Perform color difference analysis, color difference cumulative analysis, chromaticity index, color sample database management, simulating object color, etc.

Advanced Power Management Design: using high capacity Li-ion battery in colorimeter. It can measure more than 3000 times on one charge to ensure the stability of long time measurement.

### ● Technical Specifications

Model	ME-NR200
Illuminating/Viewing Geometry	8/d
Measuring Aperture	Φ8mm
Detector	Silicon photoelectric diode
Color Space	CIEL*a*b*C*h* CIEL*a*b*
Color Difference Formula	$\Delta E^*ab$ $\Delta L^*a^*b^*$ $\Delta E^*C^*h^*$
Light Source / Light Source Device	D65 / LED blue light excitation
Errors Between Each Equipment	$\leq 0.50\Delta E^*ab$
Storage	100pcs standards 20000pcs samples
Repeatability	Standard deviation within $\Delta E^*ab$ 0.08, Average °F 30 measurements °F standard white plate
Dimension	205*70*100 mm & 500g
Power source	Rechargeable lithium-ion battery 3.7V@3200mAh
Lamp Life	3 years, more than 1 million measurements
Charging Time	8 hours--100% electricity
Measure Times Before Recharging	3000 times in 8 hours
Operate Tem./Humidity Range	-10~40°C, relative humidity 0~85% with no condensation
Data Interface/Optional Accessory	USB /Miniature thermal printer, Powder Test Box

## Digital Solution Colorimeter



### ● Application

This instrument is used the principle of photoelectric colorimetry to measuring its color concentration of solution. “Hazen” is measuring units (Hazen is colour intensity unit.). It can be widely apply to power plant, waterworks, life sewage treatment plants, drink factories, environment protection departments, process water, brewage and drugs manufactures, guard departments, hospitals, etc.

### ● Features

Adopt LCD display, makes reading more comfortable and free of natural light.

Easy operation, suitable measurement ranges, rational price & high performance, widely apply to all kinds of industries.

Unique positioning structure, high precision of light path, effectively ensure long-time & stable running.

With RS232 interface.

### ● Specifications

Model	ME-SD-2
Measurement Range	0-500Hazen
Resolution	0.1
Zero Draft	±1Hazen
Indication Stability	1Hazen
Repeatability	≤3%
Basic Error	≤5%F.S
Power Supply	220V±10% 50Hz
Dimension & Weight	370×260×210mm & 2kg

## Portable Solution Colorimeter



### ● Introduction

The portable microcomputer colorimeter uses photoelectric colorimetric principle to test the chroma of aqueous solution. The instrument is calibrated with the standard solution of platinum cobalt standard specified in the national standard GB5750. The utility model is a precise and intelligent instrument, which has the advantages of good linearity, accurate and reliable measurement and convenient operation.

### ● Application

Can be widely used in color department power plant, pure water, tap water plants, sewage treatment plants, beverage plants, environmental protection departments, industrial water, wine industry, pharmaceutical industry, hospitals, epidemic prevention departments were determined, so as to achieve the required water quality standards.

### ● Specifications

Model	ME-PSD2
Determination method	platinum cobalt standard colorimetric
Range	0-500PCU
Accuracy	0.1PCU
Basic error	+ 5%F.S
Zero drift	+ 1 degrees
Repeatability	less than 3%
Power supply	220V/50HZ AC and DC

## Turbidity Meter



### ● Introduction

Intelligent turbidity instrument using light scattering principle, the volumetric solution for horse hydrazine is generally used to adopt international standard solution. It is precision, intelligent instruments, can measurement of turbidity linear, numerical accuracy, reliable, easy to operate. The instrument is suitable for use in water plant, water treatment plants, swimming pool water recycling, food and beverage industry, etc.

### ● Specifications

Portable Turbidity Meter						
Model	PZD-2A	PZD-201	PZD-401	PZD-501	PZD-801	PZD-1001
Principle	90°The scattered light					
Measure Range (NTU)	0-200	0-100, 0-200	0-100, 100-400	0-100, 100-500	0-100, 100-800	0-100, 100-1000
Min. value	0.1	0.01; 0.1	0.01; 0.1	0.01; 0.1	0.01; 0.1	0.01; 0.1
Calibrate point	-	4	5	6	6	7
Error value	±6%(±2%F.S)					
Heavy after sex	≤0.5%					
Zero drift	±0.5%F.S					
Size and weight	210*75*70MM&0.5KG					
Power supply	Dc 1.5 V * 5 AA alkaline batteries, ac 220 V / 50 hz / ; A220 V / 50 hz ; 110V / 60Hz., DC7.5 V / 0.2 A power adapter, automatic shutdown, ac/dc.					
Features	Microcomputer configuration, with an average measurement mode, there is the function of data storage and query, automatic switching range.					

Bench Top Turbidity Meter					
Model	BWGZ-200BS	BWGZ-400BS	BWGZ-500BS	BWGZ-800BS	BWGZ-1000BS
Minimum Principle	90°scattered light				
Minimum Readout	0.01NTU, 0.1NTU				
Measuring range (NTU)	0~100, 0~200	0~100, 100~400	0-100, 100-500	0-100, 100-800	0-100, 100-1000
Calibration point	4	5	6	6	7
Basic error (F.S)	±6% (±2%F.S)				
Heavy after sex	≤0.5%				
Zero draft (F.S)	±0.5%F.S				
Power Supply	A220 V / 50 hz ; 110V / 60Hz.				
Size&Weight	400*300*250mm & 0.5kg				
Features	Microcomputer, touch keyboard, back light LCD 2. Custom-made high strength long service life lamp-house, provided with data storage and inquiry function,can meet GLP requirements. 3. Data nonlinear processing and data smoothing function,quick and automatic multi-points calibration self-diagnostic information prompt, select-able span – automatic or manual switch. 4. Precise light route system, reliable positioning structure, effective tone compensation, direct turbidity reading. 5. Affordable, wide measuring range, waterworks is special, stability is good				

## Pen Dissolved Oxygen Meter



### ● Introduction

ME-JBP-90A pen dissolved oxygen analyzer, mainly for the convenience of users to carry out operation of the design. The instrument can be divided into two parts: sensor and electronic unit. The film type polarographic oxygen electrode. The electronic unit is composed of a high integrated circuit using dot matrix liquid crystal display, can display dissolved oxygen value and temperature.

### ● Application

The dissolved oxygen meter measures the amount of oxygen dissolved in an aqueous solution. Oxygen dissolves in the water through ambient air, air flow, and photosynthesis. Can be used to measure: such as aquaculture, biological reactions, environmental testing (lakes, streams, oceans), water/wastewater treatment, wine production.

### ● Technical Specifications

Model	ME-JBP-90A
Measurement range	(0 ~ 20) mg/L
Temperature range	(0 ~ 40) °C
Dissolved oxygen Basic error	+ / - 0.3mg/L
Temperature Basic error	+ 1 °C
Residual current	<0.15mg/L
Response time	<30s (20 °C when the 90% response)
Auto temperature compensation range	0 ~ 40 °C
Power	1.5V button battery (4pcs)
Size and weight	40mm*185mm & 88g

## Portable Dissolved Oxygen Analyzer



### ● Introduction

ME-JPB-607A portable intelligent dissolved oxygen analyzer (hereinafter referred to as the instrument), mainly for the convenience of users to carry to the site operation and design. The instrument can be divided into two parts, the sensor and the electronic unit. The sensor film type polarographic oxygen electrode. The electronic unit is a high integrated circuit. The instrument uses dot matrix liquid crystal display, which can display the value of dissolved oxygen and temperature.

### ● Main Features

- 1). Dot matrix backlight LCD display
- 2). Automatic temperature compensation, fast response time
- 3). Portable, easy to carry
- 4). With the factory dissolved oxygen electrode (a type of film coated with the film type)

### ● Technical Parameter

Model	ME-JPB-607A
Dissolved oxygen Measurement range	(0 ~ 20) mg/L
Temperature range	(0 ~ 40) °C
Dissolved oxygen Basic error	+ / - 0.3mg/L
Temperature Basic error	+ 1 °C
Residual current	<0.15mg/L
Response time	<30s (20 °C when the 90% response)
Automatic temperature compensation range	0 ~ 40 °C
Power	1.5V button battery (4pcs)
Size and weight	180 x 80 x 30mm & 1kg



Pen pH Meter



● Introduction

ME-PH-001/002 type pen type PH meter, is user-friendly portable, on-site or field operations designed to simultaneously display the PH and temperature values, the instrument is suitable for tap water monitoring, aquaculture, environmental protection, printing and dyeing, electroplating, beverage industry and research institutes determination of water quality, PH value.

● Technical Specifications

Model	ME-PH001	ME-PH002
Measuring range	0.00~14.00PH; 0℃-50℃ (32°F-122°F)	
Resolution	pH: 0.1PH, Temperature: 0.1℃ (1°F)	pH: 0.01PH, Temperature: 0.1℃ (1F)
Accuracy	±0.1pH, Temperature ±1.0℃(2°F)	
Temperature Compensation	0℃~50℃ (32-122F)	
Operate Temperature	0℃~50℃	
PH calibration	Adjust PH: 25 ℃, Ph 4.0 ,6.9 ,9.2	Adjust PH: 25 ℃, Ph 4.00, 6.86, 9.18
Battery	4*1.5V (AG-13)	
Size&weight	188*35*35mm & 88g	

Portable PH Meter



● Working conditions

Environment temperature: 0 ~ 40 ℃  
Relative humidity: < 85%  
Electric power: 1.5V battery /4 Festival  
No significant vibration  
Except without external magnetic field of the earth  
magnetic field interference  
The input impedance: ≥ 1 × 1012 Ω  
Drift: ≤ 0.01pH ± 1 words / 2 hours  
Solution temperature compensation range: 0 ~ 60 ℃  
The size and weight: 180 \* 80 \* 30MM (length \* width \* height) 0.5Kg  
Power consumption: 2 W

● Specifications

Model	ME-PHB-1	ME-PHB-4
Measure range	pH:0~14.00Ph; mV:±1600mV; Temperature:0~60℃	pH:0~14.00pH mV:±1999mV, Temperature:0~60℃
Resolution	pH:0.01pH; Temperature:±1℃	pH:0.01pH, Temperature:±1℃
Precision	pH:0.01pH; Temperature:±1℃	pH:0.01pH, Temperature:±1℃
Temperature compensation	0-60℃ Manual compensation	0-60℃ Manual / automatic compensation
Accessories	E201-C plastic PH composite electrode * 1 PC The PH buffer reagent: 1 sets of pH4, pH6.86, pH9.18 Short-circuit plug (inserted in the instrument back electrode socket) * 1PC 7 DC1.5V batteries * 4 PCS Use manual * 1 PC Product Quality certificate * 1 PC	

## PHB-4-P220 (65-1C) Portable PH Meter



### • Functions

- ❖ LCD backlight display
- ❖ Simultaneous display of pH value, temperature or mV (ORP)
- ❖ It has manual temperature compensation function and supports two-point calibration.
- ❖ Novel appearance, portable and easy operation
- ❖ It is equipped with P220 (65-1C) electrode, routine solution measurement high precision organic measurement.

### • Specifications

Model	PHB-4-P220 (65-1C)
Measuring Range	pH:(0.00~14.00)pH ; mV:(-1400~1400)mV
Resolution	pH:0.01pH ; mV:1mV
Accuracy	pH:±0.03pH±1bit ; mV:±0.2%FS
Input Impedance	≥3×10 <sup>11</sup> Ω
Stability	(±0.03pH± byte)/3h
Temperature Compensation	Manual (0.0~60.0)°C
Power	2 alkaline batteries of model 5
Dimension/Net Weight	170*75*30mm&0.5KG
Package Size/Gross Weight	260*260*200mm&1.5KG
Standard Accessories	PH Meter * 1pc ; Glass pH electrode * 1pc pH standard reagent ( 4.01/7.00/10.01) Power plug * 1pc ; English manual * 1pc Quality certificate * 1pc ; Warranty card * 1pc Carrying box (option)

### P220 (65-1C) Glass PH Electrode Parameters

Range	Accuracy	Use Temperature	Reference		Size	Cable	Connector
			Junction	Solution			
0-14ph	0.01ph	0-80℃	ceramics	KCL	Φ 12*120	1.0m	BNC

## PHB-4-P213 (E-201-Z) Portable PH Meter



### • Functions

- ❖ LCD backlight display
- ❖ Simultaneous display of pH value, temperature or mV (ORP)
- ❖ It has manual temperature compensation function and supports two-point calibration.
- ❖ Novel appearance, portable and easy operation

- ❖ It is equipped with P213(E-201-Z) spear electrode, Penetration measurement

### • Application

Spear stainless steel ph probe : Penetration measurement

1. Foods and Drinks : Meat, Fruits, Fish, Paste, Cheese, Vegetables, preserves
2. Environmental Detection: Soil

### • Specifications

Model	PHB-4-P213 (E-201-Z)
Measuring Range	pH:(0.00~14.00)pH ; mV:(-1400~1400)mV
Resolution	pH:0.01pH ; mV:1mV
Accuracy	pH:±0.03pH±1bit ; mV:±0.2%FS
Input Impedance	≥3×10 <sup>11</sup> Ω
Stability	(±0.03pH± byte)/3h
Temperature Compensation	Manual (0.0~60.0)°C
Power	2 alkaline batteries of model 5
Dimension/Net Weight	170*75*30mm&0.5KG
Package Size/Gross Weight	260*260*200mm&1.5KG
Standard Accessories	PH Meter * 1pc ; pH electrode * 1pc; Power plug * 1pc pH standard reagent ( 4.01/7.00/10.01) ; Quality certificate*1pc English manual * 1pc; Warranty card * 1pc; Carrying box (option)

### P213 (E-201-Z) 316L Stainless steel PH Electrode Parameters

Range	Accuracy	Use Temperature	Reference		Size	Cable	Connector
			Junction	Solution			
0-14ph	0.03ph	0-70℃	ceramics	KCL gel	Φ12*80	1.0m	BNC

## PHB-4-P214 (E-201-P) Portable PH Meter



### ● Functions

- ❖ LCD backlight display
- ❖ Simultaneous display of pH value, temperature or mV (ORP)
- ❖ It has manual temperature compensation function and supports two-point calibration.
- ❖ Novel appearance, portable and easy operation
- ❖ It is equipped with P214 (E-201-P) flat electrode, Surface sample measurement

### ● Application

Plastic PH plat probe, Surface sample measurement:

1. Foods and drinks : Meat, Fruits, Fish, Paste, Cheese, Vegetables, preserves
2. Pharmaceuticals: Blood plasma , succus gastricus, pharmaceutical formulation, protein samples, urine, enzyme solution, gel, etc.
3. Industrial samples: Leather, paper, textile, etc.
4. Daily nursing : Skin

### ● Specifications

Model	PHB-4-P214 (E-201-P)
Measuring Range	pH:(0.00~14.00)pH ; mV:(-1400~1400)mV
Resolution	pH:0.01pH ; mV:1mV
Accuracy	pH:±0.03pH±1bit ; mV:±0.2%FS
Input Impedance	>=3×10 <sup>11</sup> Ω
Stability	(±0.03pH± byte)/3h
Temperature Compensation	Manual (0.0~60.0)°C
Power	2 alkaline batteries of model 5
Dimension/Net Weight	170*75*30mm&0.5KG
Package Size/Gross Weight	260*260*200mm&1.5KG
Standard Accessories	PH Meter * 1pc ; pH electrode * 1pc; Power plug * 1pc pH standard reagent ( 4.01/7.00/10.01 ) ; Quality certificate*1pc English manual * 1pc; Warranty card * 1pc; Carrying box (option)

### P214 (E-201-P) Plastic PH Electrode Parameters

Range	Accuracy	Use Temperature	Reference		Size	Cable	Connector
			Junction	Solution			
0-14ph	0.03ph	0-70°C	Fibre	KCL	Φ 12*120	1.0m	BNC

## Bench Top PH Meter



### ● Introduction

The ME-PHS-3 series Bench top ph meter is used for laboratory measurement of PH value of high-precision instruments, with pH, mV dual function. With the E201 composite electrode, fast response, good stability.

The instrument is controlled by microprocessor intelligent pH meter, the high reliability of imported refined integrated components and the strict screening, performance is stable, reliable, easy to operate.

It is suitable for the laboratory of precision measurement solution acidity (pH) and the electrode potential (mV), widely used in light industry, chemical industry, pharmacy, food, epidemic prevention, environmental protection and education scientific research department of electrochemical analysis.

### ● Technical Specifications

Model	ME-PHS-3C	ME-PHS-3CW	ME-PHS-3DW
Measuring Range	pH:0~14.00pH; mV:±1600mV; temperature:0~100°C		
Resolution	pH:0.01pH, temperature:±1°C		
Precision	pH:0.01pH,temperature:±1°C		
Tem. Compensation	0-100°C Manual		0-100°C Manual/Automatic
Storage record Function	NO	YES	YES
Accessories	E-201-C plastic PH composite electrode(for the solution temperature of 5-60 °C measurement) PH Standard buffer reagent: pH4, 6.86, 9.18 Electrode holder Power Adapter (9V DC output)		E-201-C plastic PH composite electrode(for the solution temperature of 5-60 °C measurement) Temperature electrode (only suitable for solution used in the 0-65 °C) PH Standard buffer reagent: pH4, 6.86, 9.18 Electrode holder Power Adapter (9V DC output)
Working conditions	Ambient temperature:0 ~ 40 °C; Relative Humidity: <85% ; No significant vibration In addition to the Earth's magnetic field external magnetic field interference Input impedance:≥ 1*10 <sup>12</sup> Ω ; Zero drift: ≤ 0.01pH ± 1 word/2 hours Solution temperature compensation range:0~ 100 °C Dimensions and weight: L230*W200*H60mm & 1.2Kg		

## Bench Top pH Meter



### ● Introduction

Large screen, LCD display, dual parameter  
Automatic buffer recognition and two-point calibration  
Manual and automatic temperature compensation  
Simultaneous measurement or display of pH value, temperature and mV(ORP)

### ● Specifications

Model	ME-PHS-3E
Measuring Range	pH:(-2.00~18.00)pH mV:(-1999~1999)mV Temperature:(0.0~99.9)°C
Resolution	pH:0.01pH mV:1mV Temperature:0.1°C
Basic Error	pH:±0.01pH±1 bit mV:±0.1% FS Temperature:±0.3°C±1 bit
Input impedance	≥1*10 <sup>12</sup> Ω
Stability	(±0.01pH±1 bit)/3h
Temperature compensation	Manual/Automatic(0.0~99.9)°C
Power Supply	AC (220±22)V, (50±1)Hz
Dimension(mm)/Net Weight	300*200*72&1.5KG
Package Size/Gross Weight	340*270*280mm&2.5KG
Standard Accessories	PH electrode, PH standard solution, universal electrode holder, Power adapt 110-240V

## Bench Top pH Meter



### ● Features

LCD display, English operation system for easy use;  
Automatic/manual temperature compensation in wide range;  
Self-calibration, self-calculation of electrode percentage of theoretical slope;  
Test results can be stored, deleted, viewed, printed. The amount of data can reach the max. of 200 sets;  
Five types of pH buffer solution can be chosen to conduct automatic calibration (one point or two points);  
It has RS-232 interface, and it can be connected to TP-16 printer. Also, the interface can be used to connect data collecting software and computer;  
It can be used to measure pH value of ultrapure water, pure water and boiling water by adjusting equipotential point and choosing specific electrode;  
It is equipped with E-301F combined electrode and T-818-B-6 temperature electrode.

### ● Specifications

Model	ME-PHSJ-3F
Measuring range	pH:(-2.00~20.00)pH mV:(-1999~1999)mV Temperature:(-5.0~135.0)°C
Resolution	pH:0.01pH mV:1mV Temperature:0.1°C
Accuracy	pH:±0.01pH±1 bit mV:±0.1% FS Temperature:±0.3°C±1 bit
Input impedance	≥1*10 <sup>12</sup> Ω
Stability	(±0.01pH±1 bit)/3h
Temperature compensation	Manual/Automatic:(-5.0~135.0)°C
Power Supply	DC power (9V DC, 500mA, inside positive and outside negative)
Dimension(mm)/Net Weight	210*280*90&1KG
Package Size/Gross Weight	340*270*280mm&2.5KG
Standard Accessories	PH electrode, ph standard solution, universal electrode holder, Power adapt 110-240V, PC software, USB cable



**983 PH/EC/Temperature Meter**  
**986 PH/TDS/Temperature Meter**



The water quality monitor is professional and useful tool for testing PH/TDS/TEMP of solution level. Suitable for aquarium pool and environment water.

● **Features**

Use to measure the PH & TDS & TEMP of solution.  
 Electrode probe can be replaced, ATC function.  
 Easy calibration of pH and TDS with just a mini-screwdriver.  
 Large and clear LCD with backlight, easy to read and accurately measuring functions.  
 Apply in water sources, aquarium, hydroponics, spas, swimming pools and other water systems.  
 Automatic temperature compensation.

● **Specifications**

Range	pH: 0.00 ~ 14.00pH TDS: 0.00 ~ 19990ppm (986) EC: 0.00 ~ 19990us/cm (983) Tem.: -50°C ~ 70°C (-58°F ~ 158°F)
Resolution	pH: 0.01pH TDS: 10ppm (986) EC: 10us/cm (983) Temperature: 0.1°C (0.2°F)
Accuracy	H: ±0.1pH TDS: ±2%F.S(986) EC: ±2%F.S (983) Temperature: ±1°C (±2°F)
Temperature Compensation	0°C ~ 50°C (32°F ~ 122°F)
Working temperature	0°C ~ 50°C (32°F ~ 122°F)
Power Supply	DC 6V
Battery	4×1.5V AG-13 Button Cell Batteries
Material	ABS
Item Size	Approx. 188 * 40 * 40mm / 7.4 * 1.6 * 1.6in ; 75.7g / 2.7oz
Package Size	Approx. 21 * 10.4 * 5cm / 8.3 * 4.1 * 1.9in, 158g / 5.6oz
Package List	1 * pH & EC & TEMP Meter; 1 * User Manual 1 * Mini Screwdriver ; 1 * plastic box

**Portable Multi-parameter Meter**



● **Features**

1. Several parameters can be shown on the same screen.
2. It can simultaneously measure pX/pH, mV, conductivity, TDS, salinity, resistivity, dissolved oxygen, saturation and temperature.
3. It provides many common ion modes such as H<sup>+</sup>, Ag<sup>+</sup>, Na<sup>+</sup>, K<sup>+</sup>, NH<sub>4</sub><sup>+</sup>, Cl<sup>-</sup>, F<sup>-</sup>, NO<sub>3</sub><sup>-</sup>, BF<sub>4</sub><sup>-</sup>, CN<sup>-</sup>, Cu<sup>2+</sup>, Pb<sup>2+</sup>, Ca<sup>2+</sup>
4. It follows GLP practice and can store and print 2200 sets of measuring data.
5. It provides zero oxygen and full scale calibration.
6. It provides three measuring modes: continuous measuring, timing measuring and balance measuring mode.
7. It has USB ports. If matched with communication software, it can be connected with PC.
8. It is small size and low-energy designed. The protection level is IP65 for portable work and field measurement.

● **Specifications**

Input impedance: >3\*10<sup>12</sup>Ω  
 Dissolved oxygen response time: (±0.03pH± byte)/3h  
 Automatic Temperature compensation: pH:(0.0~100.0)°C ; Conductivity: (0.0~100.0)°C ;  
 Dissolved oxygen:(0.0~40.0)°C  
 Power:4 alkaline batteries of model 5  
 Dimension/ Net Weight: 210\*10\*45mm&0.5KG  
 Package Size/ Gross Weight: 490\*375\*210mm&4KG  
 Standard Accessories: PH electrode, conductivity electrode, do electrode, temperature sensor, PH standard solution, Carrying box

Model	ME-DZB-712
Parameters	Conductivity, pH, temperature
Measure range	pH:(-2.00~20.00)pH O R P:(-1999.9~1999.9)mV Conductivity:0.000μS/cm~199.9mS/cm Resistivity:0.Ω.cm~20.00MΩ.cm T D S:0.000 mg/L~100g/L Salinity: (0.00~8.00)% Dissolvedoxygen:(0~19.99)mg/L (Optional) Saturation: (0.0~199.9)% Ion concentration:(0~19990) (Optional) unit: ug/L,mg/L,g/L,mol/L,mmol/L Temp: (-5.0~135.0)℃
Resolution	pH/pX: 0.01pH O R P: 0.1 mV Conductivity:0.001μS/cm Resistivity: 0.01 Ω.cm T D S:0.001 mg/L Salinity: 0.1 % Dissolved oxygen:0.01mg/L Saturation (Optional) Temp:0.1℃
Accuracy	pH/pX:±0.01pX±1 pH/pX:±0.01pX±1 digit ORP: ±0.1%FS Conductivity: ±1.0%FS Resistivity:±1.0%FS T D S:±1.0%FS Salinity: ±0.2% Ion concentration: ±0.5%±1 digit Dissolved oxygen:±0.30mg/L Dissolved oxygen saturation:±10.0% Temp: ±0.3℃±1 digit

## ME-ZD-2 Potential Titrator



### ● Features

- ✧ For using in the food, pharmaceutical, agricultural, and petroleum industries.
- ✧ Manual titrates to your endpoint with easy digital control .
- ✧ Everything you need in one meter for Manual titration, Constant PH potential titration, etc.
- ✧ Automatic add liquid and judge end-point of titration.

### ● Application

ME-ZD-2 potential titrator is suitable for many kinds of potentiometric titration, widely used in scientific research, teaching, chemical industry, environmental protection and many other fields.

### ● Specifications

Model	ME-ZD-2
Parameters	mV (ORP); pH
Range	(0~±1400) mV, (0~14.00) pH
Resolution	1mV, 0.01pH
Basic error	pH: ±0.03pH mV: ±5mV
Stability	±0.01pH /3h
Power supply	AC(220±22) V;(50±1) Hz
Dimension & Weight	490*410*300mm; 5kg
Standard configuration	217-01 Reference electrode 213-01 Platinum electrode 216-01 Silver electrode Two-in-one combination pH electrode PH Standard Buffer Reagent Stirrer
Optional accessories	Probe

## ME-ZDJ-4B Potential Titrator



### • Application

ME-ZDJ-4B automatic potentiometric titrator is a kind of laboratory analytical instrument with high analytical precision. It is mainly used for chemical analysis of various components in universities, scientific research institutions, petrochemicals, pharmaceuticals, drug testing, metallurgy and other industries.

### • Features

- The system is ideal for use in the food, pharmaceutical, agricultural, and petroleum industries
  - Automatically titrates to your endpoint with easy digital control and curve
  - Ensure the accuracy of your measurements with precise burettes and sensors
  - Everything you need in one meter for Pre-titration, Back titration, Pre-endpoint titration, Manual titration, Constant titration, etc or set titrating mode by customer
  - Method: Acid/acidity, Redox, Precipitation, Complexometry, Non-aqueous titrations
  - Use the auto titrator with any combination pH electrode to do pH measurement
  - Data is easily exported to a printer or PC via USB t & RS 232 port or be view, deleted in the meter.
- Store up to 200 data sets in the meter's memory for retrieval later
- Meter meets GLP requirements

### • Technical Specifications

Model		ME-ZDJ-4B	
Titration Device	Volumetric Titration Unit	Repeatability of titration analysis	0.2%
		Allowable error of titration capacity	10ml Burette: ±0.025ml; 20ml Burette: ±0.035ml
		Resolution of burette	10ml Burette: 1/10000; 20ml Burette: 2/10000
		Speed of infusion	(55±10)s (When the burette is full scale )
Measurement Device	Potential Titration	Range	(-1800.0～1800.0) mV (0.00～14.00) pH
		Resolution	0.1mV, 0.01pH
		Basic error	pH: ±0.01pH mV: ±0.03%FS
		Stability	(±0.3mV±1bit) /3h
	Temp. Compensation	Range	(-5.0～105.0) °C
		Resolution	0.1 °C
		Basic error	±0.3 °C
Power supply		AC(220±22) V;(50±1) Hz	
Dimension & Weight		540*490*480mm; 13kg	
Standard Accessory		10mL Valve-burette; 213-01 Platinum electrode, 216-01 Silver electrode; 231-01 pH electrode, 232-01 Reference electrode; 217-01 Reference electrode, T-818-B-6 ATC probe; pH buffer; PC Software	
Optional Accessories		20mL Valve-Burette; Auxiliary titration unit Anti-diffusion capillary; Upper stirrer; Probe; Printer	

### ME-KLS-411 Micro Karl Fischer Titrator



#### • Features

- Large-screen LCD display, easy to operate, high degree of automation;
- Can measure 10 $\mu$ g ~ 20mg of water;
- Coulometric method, using membrane electrode, is suitable for the determination of trace water samples such as organic solvents and oils;
- Use low-toxic, low-pollution, odorless K-F reagent that can be reused many times;
- The reagent does not need to be calibrated;
- Support storage, review, and deletion of measurement results;
- The instrument supports RS232 interface and can be connected to the printer.

#### • Application

ME-KLS-411 Trace Moisture Analyzer is suitable for the determination of trace liquid samples and is often used to measure samples with low water content.

#### • Specifications

Model	ME-KLS-411
Range	10 $\mu$ g~20mg
Electrolytic current	10mA、20mA、50mA、100mA
Polarization current error	$\pm 0.2\mu$ A
Electrolytic current basic error	$\pm 0.5\%$
Indication error	$\pm (5\% \text{ verification point} + 3) \mu$ g
Measurement repeatability	Less 3%
Power supply	(220 $\pm 22$ ) V;(50 $\pm 1$ ) Hz
Size & Weight	300*235*100mm; 3kg
Standard configuration	Main machine ; Cell ; Blender ; Desiccant ; Lubricant Oxygen needle; etc.

### ME-ZDY-502 Volumetric Karl Fischer Titrator



#### • Features

- The system is ideal for use in the food, pharmaceutical, agricultural and petroleum industries
- Automatically titrates to your endpoint with easy digital control
- The end point is detected by the use of sensing electrodes which measure the moisture change in the liquid and solid
- Ensure the accuracy of your measurements with precise burettes and sensors
- Everything you need in one meter for Pre-titration, Auto-titration, Manual titration, Constant titration, KF volumetric titrations
- Titrator displays results in %, mg, mg/L, and ppm of water
- The KF reagent is depend on different sample. KF solution do not need be calibrated
- Data is easily exported to a printer or PC via USB port & RS 232 port or be view, deleted in the meter

#### • Application

ME-ZDY-502 type constant moisture titrator is equipped with a leakproof liquid device and a waste liquid bottle anti-suction device. Full automatic liquid injection, liquid discharge, KF reagent mixing and automatic cleaning function, anti-titration cup solution overflow protection function; Prevent users from direct contact with KF reagents to ensure the safety of measuring and using staff and the environment.

#### • Specifications

Model	ME-ZDY-502
Range	0.1mg~250mg
Resolution	0.1mg
Accuracy of Polarization Current	1 $\mu$ A $\pm 0.2\mu$ A; 50 $\mu$ A $\pm 10\mu$ A;
Repeatability of Titration Analysis	$\pm 0.5\%$
Power supply	(220 $\pm 22$ ) V;(50 $\pm 1$ ) Hz
Dimension & Weight	540*490*480mm; 10kg
Standard configuration	10mL Burette ; Solid cup measuring device, Anti-diffusion capillary.
Optional accessories	Anti-diffusion capillary; Printer



## Residual Chlorine Analyzer



### ● Introduction

Residual chlorine instrument is suitable for large, medium and small waterworks and industrial and mining enterprises, swimming pool, life or industrial water detection of residual chlorine concentration, in order to control the residual chlorine meet the prescribed standards for water quality of water.

Product advantages: small volume, easy to carry, reduce the use of personnel requirements, and can provide reliable test results.

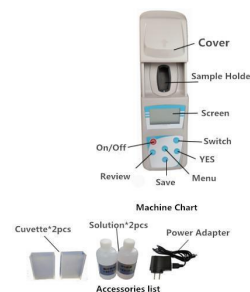
### ● Advantages

Small volume, easy to carry, reduce the use of personnel requirements, and can provide reliable test results.

### ● Technical Specifications

Model	ME-RC-P	ME-RC-B
Type	Portable	Bench Top
Measuring range	0-10 mg/L	
Resolution	0.01 mg/L	
The repeatability	1%	
Linear error:	plus or minus 5% FS + 1	
Operating temperature	5 °C to 35 °C	
The power supply voltage	1.5 V dc x5 AA alkaline batteries, Ac 220 V / 50 hz/DC7.5 V / 0.2 A power adapter, automatic shutdown, ac/dc in two	AC220V / 50 hz
Packing list	Main machine, power plug, color dish, A/B Reagent, manual.	

## Ammonia Nitrogen Meter



### ● Introduction

Ammonia nitrogen (NH<sub>3</sub>-N) in the form of free ammonia (NH<sub>3</sub>) or ammonium salt (NH<sub>4</sub><sup>+</sup>) in water, the composition ratio of the two depends on the pH value of water. When the pH value is high, the ratio of free ammonia is higher. On the other hand, the ratio of ammonium salt is high.

### ● Features

Using the cold light and monochromatic light as the light source, the optical stability is excellent, not disturbed by various light.

Large screen LCD crystal display.

Can store 20 historical records, power is not lost.

With ex factory internal storage curve recovery function.

With the printing function (optional models).

The host chassis using molded ABS material, good corrosion resistance.

### ● Technical Parameter

Model	ME-AD-82 (Potable) / ME-AD-82T (Bench top)
Measurement range	0.02-25mg/L
Error	+ 3% (F.S)
Repeatability	≤3%
Optical stability	<0.002A(Within 20sec)
Resolution	0.01mg/L
Power consumption	<10W
Size& weight	266 * 200 * 130 (mm)&1kg
Operate environment temperature	5 ~ 40 degrees
Operate relative humidity	<85%
Power supply	220V or 5 1.5V batteries

## Pen Conductivity Meter



### ● Introduction

Pen type electric conductivity meter, it is designed for on site or field operation at the same time conductivity value and temperature value of portable pen type precision instruments.

The instrument is suitable for tap water monitoring, aquaculture, environmental protection, printing and dyeing, electroplating, beverage industry and scientific research units for the determination of the conductivity of water quality.

### ● Technical Parameter

Model	ME-DDB-12H	ME-DDB-12L
Measuring range	0.00 to 25.00 mS.	0-1999mS.
Accuracy	+ / - 0.02 mS + 2% FS	+ / -2mS + 1% FS
Resolution	0.01 mS.	1 mS.
Conductivity calibration	12.88 mS point calibration	1413 (including s point calibration)
Tem. compensation	Manual (10.0~50.0)°C	Automatic (10.0~50.0)°C
Temperature display	0.1 °C/ °F	
Working temperature	0 ~ 50 °C(32 ~ 122 °F)	
Automatic tem. compensation	0 ~ 50 °C	
Size	Φ 40 * 185 mm including electrode. & 88 g including electrode	

## Portable Conductivity Meter



### ● Introduction

This instrument is mainly used for all kinds of liquid conductivity measurement. When the electrodes with constant 0.1 specifications, measuring the conductivity of pure water or high pure water.

Can be widely used in light industry, chemical industry, food, medicine, health, energy, environmental protection and education and scientific research departments.

Instrument by microcomputer control, high precision; Good stability; High reliability; The operation is simple; Maintenance is convenient.

### ● Features

LED digital display

Four measuring ranges can be chosen and switched.

It has manual / Automatic temperature compensation function. Automatic switch of measuring range and frequency for better accuracy It is portable and the life of batteries exceeds 100h (continual use)

It is equipped with conductance sensor (platinum black).

### ● Specifications

Model	ME-DDB-11A	ME-DDBJ-350
Measuring range	Conductivity: 0.00μS/cm~100 mS/cm, four kinds of measuring range can be switched	
Accuracy	Electricity meter, ±1.0% FS. Matching: ± 1.5% FS	
Resolution	0.1/1μs/cm ; 0.01/0.1ms/cm	
Tem. compensation	Manual (10.0~50.0)°C	Automatic (10.0~50.0)°C
Tem. Compensation coefficient	2%/°C	
Standard Accessories	Conductivity electrode, carrying box	Conductivity electrode, temperature electrode, carrying box

## Bench Top Conductivity Meter



### • Introduction

This instrument is mainly used for all kinds of liquid conductivity measurement. When the electrodes with constant 0.1 specifications, measuring the conductivity of pure water or high pure water. Can be widely used in light industry, chemical industry, food, medicine, health, energy, environmental protection and education and scientific research departments.

### • Features

Instrument by microcomputer control, high precision; Good stability; High reliability; The operation is simple; Maintenance is convenient.  
LED digital display; Both model equipped with conductivity sensor ( platinum black). DDS-307A also equip with a temperature sensor

### • Specifications

Model	ME-DDS-307	ME-DDS-307A
Measuring range	(0~199.9) $\mu$ S/cm ; (200~1999) $\mu$ S/cm ; (2.00~19.99)mS/cm ; (20.0~199.9)mS/cm	
Resolution	0.1/1 $\mu$ S/cm ; 0.01/0.1mS/cm	
Stability	( $\pm$ 0.33%FS $\pm$ 1 digital)/3h	
Temperature compensation	Manual:(10~5) $^{\circ}$ C	Automatic (10~50.0) $^{\circ}$ C
Temperature compensation coefficient	2%/ $^{\circ}$ C	
Optional	Constant electrode specification: 0.1、1、10	
Data storage	50 group	
Store content	No., measurement, measurement unit and temperature	
Power supply	DC9V adapter	
Package Size/G. W.	220 x 200 x 80 mm (length x width x height) 1.7 kg	
Standard Accessories	Conductivity electrode, universal electrode holder, Power adapt DC9V	Conductivity electrode, Temperature sensor, universal electrode holder, Power DC9V adapter

## Pen TDS Meter



### • Introduction

Pen type TDS is used to test the TDS precision instrument of total soluble solids (solution). At the same time show the TDS value and temperature measurement. Its functions are all stable performance characteristics such as simple operation. Make the enterprise or business the unit field and laboratory measurement TDS value is the best choice. Widely used in chemical, pharmaceutical, electronics, food industry such as monitoring.

### • Specification

Model	ME-TDS-1H	ME-TDS-1L
Features	show the TDS value and temperature	
Measuring range	0 ~ 9999 PPM	0 ~ 2500 PPM
Fine degree of	$\pm$ 2%F.S	
Resolution	1 ppm	
Automatic temperature compensation	0 $^{\circ}$ C~50 $^{\circ}$ C	
Working temperature	0 $^{\circ}$ C~50 $^{\circ}$ C	
Size& Weight	$\Phi$ 40 * 185 mm including electrode& 88g	

## Pen Salinity Meter



### ● Introduction

Pen type salinity meter is a portable pen type precision instrument which is designed to display the salinity and the temperature at the same time.

### ● Application

The instrument is suitable for water source monitoring, aquaculture, environmental protection, printing and dyeing, electroplating, beverage industry and scientific research units for the determination of water salinity

### ● Specifications

Model	ME-YD-1L	ME-YD-1H	ME-YD-1HS
Measuring range	0 ~ 2500 mg/L	0~9999ppm(mg/L)	0~3000000ppm(mg/L) , for sea water 0-30.0%=0-300ppt(g/L)
Resolution	1 mg/L.		
Accuracy	±2 mg/L (ppm)		
Salinity calibration	Salinity, 706 mg/L One point calibration		
Temperature display	0.1°C/°F		
Working temperature	0~50°C (32~122°F)		
Automatic temperature compensation	0~50°C		
Size	Φ40*185mm Include electrode.		
Weight	88 g (Include electrode).		

## Portable Gloss Meter



### ● Introduction

The Gloss meter is suitable for use in paints and coatings, inks, plastics, paper, stone, ceramic tile, porcelain enamel, stone, metal, electroplating and other products of gloss. Automatic calibrate when turn on the machine.

### ● Specifications

Model	ME-WGG60	ME-A60	CQ-300	HP380	
Reading Range (gloss units )	0 ~ 199.9 GU	0 ~199.9Gu	0.0-1000GU	Gs(20°):0.0~ 120 Gs(60°):0.0~120 Gs(85°):0.0-120	Gs(20°):120-2000 Gs(60°):120~1000 Gs(85°):120-160
Angle	Single 60°	Single 60°	Single 60°	20°,60°,85°	
Error	1.2Gu	<±1.0Gu	0.0-99.9GU:±1.5G U	±1.5	±1.5
Spot Size	---	10*20mm	Gs (60° )9*15mm	Gs(20°):10*10mm Gs(60°):9*15mm Gs(85°):5*38mm	
Data storage	---	---	10000pcs	10000pcs	
Interface	---	---	USB	USB	
Repeat	0.4Gu	---	0.0-99.9GU:0.2GU 100-1000GU: 2%	0.5	0.5%
Size	129*45*73mm &0.3KG	112*35*70mm &200g	163.8*58.1*88.3m m&520g	163.8*58.1*88.3mm&520g	
Power	2PCS AAA Baterry	rechargeable battery 2PCS	+5V, 4pcs 1.5v alkaline batteries	+5V, 4pcs AAA alkaline batteries	



## Coating Thickness Gauge



### • Introduction

It measure magnetic metal (such as steel, iron, alloy steel and hard magnetic and non-magnetic) on the thickness of coating layer (such as aluminum, chromium, copper, enamel, rubber, paint and so on) and non magnetism metal substrates (such as copper, aluminum, zinc, tin and other non conductive cover layer) thickness (such as: enamel, rubber, paint, plastic, etc.).

### • Features

It is combines two probes in one meter and automatically identify the substrate materials. Depending on the substrate, the symbol Fe or NFe is displayed on the screen.

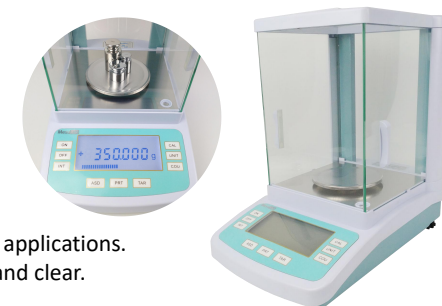
### • Technical Specifications

Model	ME-CT6
Operating Principle	magnetic induction/eddy current (F/NF)
Measuring Range	0-1250um/0-50mil
Resolution	1um/0.1mil
Accuracy	$\pm ((1-3)\%H + 2um)$
Min.measuring Area	6mm
Measuring Time	0.5s
Battery Indicator	low battery indicator
Metric/Imperial	Power supply
Operating Condition	0-40°C 10-90%RH
Display	1.8" TFT 65K
Size	109*45*27mm&56g

## Analytical Balance

### • Feature

Humanized design, novel structure, 5 surface completely transparent glass wind shield.  
Adopts double CAM experiment fully automatic internal calibration function, more stable and fast.  
Balance has "preheating" "calibration" "screen saver" & other applications.  
Large backlit LCD screen, make the operator visual more soft and clear.



### • Function

With piece, unit conversion (metric carat, gold ounces), full range peel, zero tracking, such as multi-functional, more convenient, reliable operation;  
Built-in RS232C output interface, can be connected directly to computer, printer, etc.;  
Standard Accessory: main machine, weighing, power plug, English manual, quality certificate, warranty card.

### • Specifications

Model	JA1003	JA1203	JA2003	JA3003	JA4003	JA5003	JA11003
Weighing Range	0-110g	0-120g	0-210g	0-310g	0-410g	0-510g	0-1100g
Min. Reading	0.001g ( 1mg)						
Scale Interval	1mg						
Repeatability Error	0.001g						
Linear Error	$\pm 0.002g$						
Pan Size	$\Phi 90mm$						
Size	330*215*350mm & 5.5kg						
Power	220V+22V/-33V、50Hz						

Model	FA1004N	FA1104N	FA1604N	FA2004N	FA2104N	FA2204N	FA3104N
Min Reading	0.0001g ( 0.1mg)						
Range	0~100g	0-110g	0-160g	0-200g	0-210g	0-220g	310g
Scale Interval	0.1mg						
Repeat Error	0.0002g						
Linear Error	$\pm 0.0005g$						
Pan Size	$\phi 80mm$						
Size	330*215*350mm & 7.5kg						
Power	100~240V, 50/60Hz						

## Electronic Balance



### ● Feature

Ac/dc, with level, LCD backlight display, weighing reaction speed, high stability; The sensor adopts unique locking device.

### ● Functions

Counting function, percentage, automatic calibration, calibration with many choice, calibration weights (optional);

With the unit conversion (metric carat, gold ounces), stability, memory function, animal weighing, full range reduce the gross weight, etc.

With RS232 interface, which can be connect to printer or computer.

### ● Specifications

Model	Range	Accuracy	Min.reading	Pan Size	Packing Size
YP6002	0-600g	10mg	0.01g	Φ130mm	310*235*150mm&1kg
YP10002	0-1000g	10mg	0.01g	Φ130mm	310*235*150mm&1kg
YP20002	0-2000g	10mg	0.01g	Φ130mm	310*235*150mm&1kg
YP30002	0-3000g	10mg	0.01g	Φ130mm	310*235*150mm&1kg
YP30001	0-3000g	10mg	0.1g	Φ130mm	310*235*150mm&1kg
YP10kg/0.1g	10000g	10mg	0.1g	250*185mm	370*330*170&4kg
YP20kg/0.1g	20000g	10mg	0.1g	250*185mm	370*330*170&4kg
YP15kg/1g	15000g	10mg	1g	250*185mm	370*330*170&4kg
YP20kg/1g	20000g	10mg	1g	250*185mm	370*330*170&4kg
YP30kg/1g	30000g	10mg	1g	250*185mm	370*330*170mm&4kg

## Digital Laboratory Hotplate



### ● Introduction

Hotplate is with RoHS Certifications, widely used for sample Baking, drying and other temperature experiments.

It is the indispensable instruments for biological, genetic, health and medical, environmental, biochemical laboratory analysis departments, and its main characteristics as following:

A. Heater adopts a special Process production, there is no bend phenomenon under high temperature state;

B. Working plate adopts high-quality aluminum plate with surface treated, and it has strong corrosion-resistance;

C. Fast warming up and uniform, simple and safe.

### ● Specifications

Model	DB-1A	DB-2A	DB-3A	DB-4A
Type	Stainless Steel material, Intelligent temperature hotplate			
Temperature Range	50-300°C			
Platform Dimension	200*150mm	300*200mm	380*200mm	400*300mm
Heating Power	500W	1000W	2000W	2500W
Power	220V, 50Hz			
Dimension	30*15*14cm & 5kg	40*20*14cm & 7kg	48*20*14cm & 10kg	50*30*14cm & 16kg

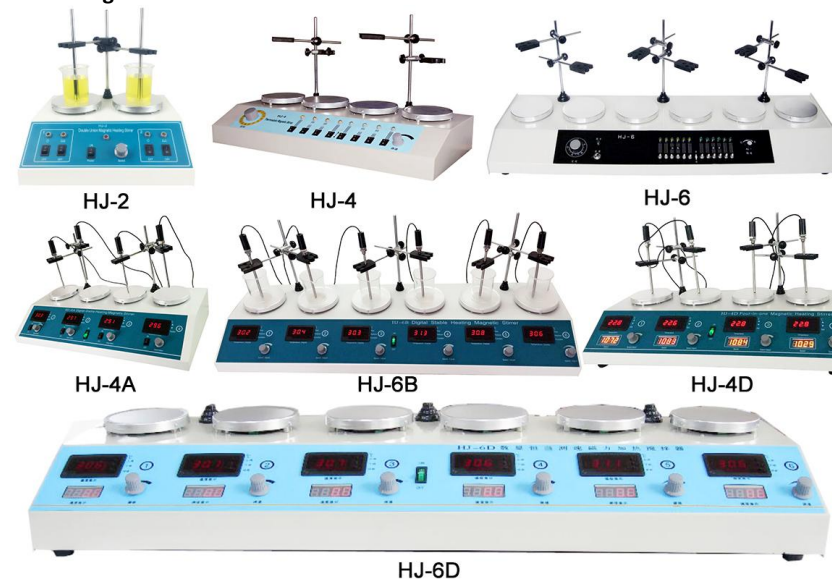
## Laboratory Magnetic Stirrer



### • Specifications

Model	MHS-A	MHS-B	MHS-C
Type	Ceramic magnetic stirrer, hold about 5L sample		
Speed Range	start up ~1600 rpm, step less speed adjustment		
Speed Display	Yes	----	----
Heating Power	600W	600W	----
Stirring Power	60W		
Temperature Range	50~320℃	50~320℃	----
Temperature Precision	±0.1℃	±0.1℃	----
Timer	0-9999min	---	----
Working Plate Size	180*180mm		
Voltage	220V 50Hz		
Characteristic	Microprocessor control Digital display speed, time, temperature	Analog adjust the temperature and speed	Single stirring function
Dimension(mm)	205*300*150&6KG	205*300*150&6KG	205*300*150&5.5 KG

## Magnetic Heating Stirrer



### • Specifications

Model	HJ-2/4/6	HJ-4A	HJ-6B	HJ-4D	HJ-6D
Type	Two/Four/Six position-in-one				
Tem. Range	---	(RT+5℃ )~100℃		(RT+5℃ ) ~100℃	
characteristic	---	Digital display temperature		Digital display temperature and speed	
Heating Power	2/4/6*120W	4/6*120W		4/6*120W	
Stirring Power	2/4/6*25W	4/6*25W		4/6*25W	
Platform Size	2/4/6*120mm	4/6*120mm		4/6*120mm	
Capacity	2/4/6*100~1000ml	4/6*100~1000ml		4/6*100~1000ml	
Speed Range	start up ~1600 rpm Step less speed adjustment				
Timer	0~120 minutes(or with no limit)				
Voltage	110V 60Hz/220V 50Hz				
Dimension(cm)	30/60/90*28*125	66/72*30*12.5		96/106*30*12.5	
Weight	4/8/12kg	9kg	14kg	11kg	16kg

Laboratory Shaker



• Specifications

Model	HY-4A	ZJZD-III	MS-1
Type	Reciprocate shaker	Syphilis Shaker	Intelligent Shaker
Motion Type	reciprocating	Orbital	Orbital
Working Size(mm)	400*270	315*218	420*290
Speed Display	Yes	----	Yes
Clamp Type	multi-use spring		Nip roll style
Speed Range	Start up-300rpm	0-210rpm	Start up-300rpm
Amplitude Size	20mm	22mm	20mm
Timer	0~120 minutes(or with no limit)	0-60min	0~99h59min
Voltage	110V 60Hz /220V 50Hz		
Dimension	40*27*20cm&12kg	32*30*12.5cm&6kg	42*41*26cm&15kg

Laboratory Mixer



• Specifications

Model	XH-C	KJMR-II	KJMR-IV
Type	Vortex mixer	Blood mixer	Blood mixer
Motion Type	Rotary	Swing/roll	Orbital
Clamp Type	Rubber head $\phi$ 55mm	7 rolls	Disk 220 mm
Speed Range	Continuous 2800rpm Inching 2000rpm	0-80rpm	0-80rpm
Amplitude Size	5mm	22mm	----
Dimension(cm)	$\phi$ 10.5×14.2&2.6kg	40*27*10&5	25*25*30&4.5
Voltage	110V 60Hz /220V 50Hz		



## Digital Heating Water Bath



### • Features

- Microprocessor control,
- Digital display inner temperature
- Stainless steel interior
- The aluminum ring cover
- Suitable for thermostatic , baking, dewaxing, sterilization

### • Specifications

Model	HH-S1	HH-S2	HH-S4	HH-S6	HH-S8
Capacity	3L	6L	10L	17L	22L
Working Size(cm)	16x16x12	30x16x12	30x30x12	46x30x12	60x30x12
Power	300W	600W	1000W	1500W	2000W
Temperature Fluctuation	±0.5℃	±0.5℃	±1℃	±1.5℃	±1.5℃
Temperature Range	(RT+5) -300℃				
Temperature Homogeneity	±1℃				
Voltage	110V 60Hz /220V 50Hz				
Dimension(cm)	23x23x24	37x23x24	37x37x24	53x37x24	67x37x24
Weight	3.5kg	4.5 kg	5.5 kg	7.5 kg	9 kg

## Laboratory Incubator



### • Features

- Microprocessor control,
- Digital display setting and actual temperature
- Over temperature alarm, PID self-tuning
- Digital display running timer,
- Stainless steel interior
- With glass observe window
- Automatic alarm after operation
- Suitable for constant temperature tests
- Suitable for bacteria cultivation, breeding, ferment

### • Specifications

Model	DNP-9025A	DNP-9052A	DNP-9082A	DNP-9162A	DNP-9272A
Capacity	16L	50L	80L	163L	270L
Working size (cm)	25x25x25	35x35x41	40x40x50	50x50x65	60x60x75
Power	150W	250W	300W	400W	600W
Temperature Range	(Room temperature+5)~65℃				
Temperature Resolution	0.1℃				
Temperature Fluctuation	±0.5℃				
Timer	0-999min				
Voltage	110V 60Hz /220V 50Hz				
Dimension(cm)	37x38x54	47x40x70	52x54x80	62x64x94	72x74x101
Weight	20kg	34kg	44kg	61kg	82kg

## Laboratory Drying Oven

### ● Features

- Microprocessor control,
- With double glass window
- Digital display setting and actual temperature
- Digital display running timer
- PID self-tuning, over temperature alarm
- Automatic alarm after operation
- Stainless-steel interior, chamber corners are semicircle
- Suitable for drying, baking, dewaxing, sterilization, solidifying

### ● Specifications



Model	DHG-9023A	DHG-9053A	DHG-9123A	DHG-9624A
Capacity	25L	55L	106L	640L
Working Size(cm)	30x30x27.5	41.5x37.5x34.5	55x37x52	80x80x100
Power	500W	1000W	1500W	5000W
Temperature Range	50~300℃			
Temperature Resolution	0.1℃			
TemFluctuation	±1℃			
Timer	0-999min			
Voltage	110V 60Hz /220V 50Hz			
Dimension(cm)	57x53x46&28kg	69x61x53&39kg	72x70x72&58kg	94x109x138&150kg

Model	DHG-9030A	DHG-9070A	DHG-9140A	DHG-9240A
Capacity	43L	71L	136L	225L
Working Size(mm)	35x35x35	45x35x45	55x45x55	50x60x75
Power	500W	1000W	1500W	2000W
Temperature	50~300℃			
Temperature	0.1℃			
Temperature	±1℃			
Timer	0-999min			
Voltage	110V 60Hz /220V 50Hz			
Dimension(cm)	62x63x52&34kg	62x71x62&48kg	72x78x75&64kg	77x84x98&80kg

## Portable Stainless Steel Sterilizer

### ● Features

- Stainless steel
- Overpressure auto-discharging 0.145-0.165MPa
- Max working temperature 126℃
- Dual scale numerical indication pressure gauge
- Self inflating type seal
- Two types: electric heating and electric/coal-heating.
- The movable interior is convenient for operation
- Applicable to medical and health care, laboratory, scientific research and food units, etc.



### ● Specifications

Model	YX280A	YX280A+	YX280B	YX280B+
Capacity	18L	24L	18L	24L
Heating Mode	Electric-heating		Electric/coal heating	
Power	2KW			
Disinfecting Pressure	0.14-0.165Mpa			
Max Working Temperature	126℃			
Voltage	110V 60Hz /220V 50Hz			
Dimension(mm)	390x390x540	390x390x650	390x390x440	390x390x540
Weight	14kg	19kg	12.5kg	17kg

## Automatic Stainless Steel Sterilizer

### • Features

- Hand wheel type of quick-open door structure
- Mechanical safety interlocking device
- Computer control auto recycle sterilization
- LED screen indicate working state
- Temperature scope 50℃-126℃
- Time scope 0-9999min
- Over pressure auto-discharging 0.145-0.165Mpa
- Automatic shut down with beep reminding after sterilization
- Fully stainless steel

### • Specifications



Model	LDZX-40B	LDZX-50B	LDZX-75B	LDZX-100B	LDZX-150B
Capacity	40L	50L	75L	100L	150L
Sterilization Room Size	Φ340×425mm	Φ340×525mm	Φ380×530mm	Φ500×560mm	Φ500×760mm
Maximum Pressure	0.145-0.165Mpa	0.145-0.165Mpa	0.145-0.165Mpa	0.145-0.165Mpa	0.145-0.165Mpa
Maximum Temperature	126℃	126℃	126℃	126℃	126℃
Maximum Timer	9999min	9999 min	9999 min	9999 min	9999 min
Heating Power	3.5KW	3.5KW	4.5KW	6.0KW	6.0KW
Power Supply	220V 50Hz	220V 50Hz	380V 50Hz	380V 50Hz	380V 50Hz
Dimension(cm)	51x51x120	51x51x125	57x57x130	60x60x136	60x60x156
Weight	55kg	58kg	77kg	120kg	140kg

## Automatic Autoclave



### • Features

- Full automatic table top autoclaves with pre-programmed sterilization cycles.
- Stainless steel chamber and door, with electro-polish finish.
- High precision control system for prefect sterilization results.
- Built-in independent steam generator, provides readily available steam for faster cycles.
- Friendly user-interface which can be operated very easily by the user.
- LCD screen, displays continuous information about cycle process.
- Open-type water tank, which is very easy for water filling and cleaning.
- Completely automatic , microprocessor controlled electronic autoclave.
- It is a non-vacuum autoclave with thermodynamic working method.
- It is the economic model for the small dental and private clinics. • Each working status and programs could be displayed as icon on the LCD screen, which is much more easier for operating by the user.

### • Specifications

Model	B8C	B16C	B18C	B23C
Capacity	8L	16L	18L	23L
Sterilization Room Size	Ø170x320	Ø230x360	Ø247x350	Ø247x450
Maximum Pressure	210Mpa	210Mpa	210Mpa	210Mpa
Maximum Temperature	134℃	134℃	134℃	134℃
Maximum Timer	0-55min	0-55min	0-55min	0-55min
Heating Power	1400W	2000W	2200W	2200W
Number of Trays	2	3	3	3
Power Supply	220V 50Hz /110V60Hz	220V 50Hz /110V60Hz	220V 50Hz /110V60Hz	220V 50Hz /110V60Hz
Dimension(mm)	370x345x565	445x400x690	480x465x690	480x465x690
Weight	35kg	45kg	47kg	51kg

## Automatic Water Distiller



### ● Introduce

This series of stainless steel without water-controlled electric heating distilled water devices to tap water as source of water, electric heating, distillation system, pure water, for health care, pharmaceutical, plating, and laboratory and other departments to use, this product rational structure, easy to use, the operation simple, out of water, large, safe, reliable, stable quality, durable.

### ● Features

1. The products are all selected high-quality stainless steel material, the use of advanced technology means well made.
2. Condenser plate stainless steel seamless pipe system, heat exchange efficiency is high, a large amount of water.
3. Electrical control devices through low-level liquid level sensor control, and the heating element work. However, an evaporation pan water, this product can automatically cut off the heating power, also issued sound and light alarm, light alarm when the water level out loud, when the water level to re-meet the requirement, to continue to heat.
4. The product with water as a source of water for electric heating system to take water distillation methods, with automatic cut off the power without water features, products, reasonable structure, stable performance, easy operation, suitable for medical and health, plating, lab, laboratory and manufacturing medicine departments.

### ● Specifications

Model	YAZD-5WS	YAZD-10WS	YAZD-20WS
Water Yield	5L/H	10L/H	20L/H
Heating Power	4.5KW	7.5KW	13.5KW
Voltage	220V 50Hz	380V 50Hz	380V 50Hz
Characteristic	Automatic cut off water	Automatic cut off water	Automatic cut off water
Dimension(mm)	320*200*680&7KG	360*250*770&8KG	470*330*750&12KG

## Centrifuge



### ● Features

- ◆ Scope of supply includes the rotor
- ◆ Can hold various sample tubes
- ◆ Small footprint
- ◆ Simple to operate
- ◆ Step speed adjustment
- ◆ Suit for qualitative analysis of blood serum and plasma

### ● Specifications

Model	LC-04R / 800D
Max. RPM	4000 RPM, step speed adjustment
Max. RCF	1790*g
Timer	0-30min
Rotor Capacity	20ml*6
Voltage	110V 60Hz / 220V 50Hz
Dimension	Ø250×220 mm & 3.5KG



## PRP Centrifuge



### • Features

- ◆ Strong Plastic case with microprocessor control
- ◆ DC Brushless motor, LED display speed and timer
- ◆ Over speed and imbalance alarm
- ◆ With mechanical door lock
- ◆ Error code display, speed up and down adjustment
- ◆ Used for PRP/PPP,
- ◆ Suit for centrifuge the 10 ml syringe directly
- ◆ It is dedicated product for the beauty salon

### • Specifications

Model	LC-04P
Max. RPM	4000 RPM, stainless speed adjustment
Max. RCF	1780*g
Timer	0-99min
Rotor Capacity	Angle rotor 15ml /10ml*8
Voltage	110V 60Hz /220V 50Hz
Dimension	280×250×240mm & 7kg

## Centrifuge



### • Features

- ◆ Strong Plastic case with metal lid
- ◆ High Brushless motor, LED display speed and timer
- ◆ Over speed and imbalance alarm
- ◆ With mechanical door lock and safety switch
- ◆ Error code display, speed up and down adjustment
- ◆ Suit for qualitative analysis of blood serum and plasma

### • Specifications

Model	LC-04C
Max. RPM	4000 RPM, stepless speed adjustment
Max. RCF	2325*g
Timer	0-99min
Rotor Capacity	20ml*12 (standard)
Voltage	110V 60Hz /220V50Hz
Dimension(mm)	280*310*265mm & 9KG

Option Rotor	Rotor capacity	Max. RCF
A042006	20ml*6	1790*g
A042008	20ml*8	2325*g
A041518	15ml*18	2325*g
A041012	10ml *12	2325*g
A040512	5ml eppendorf tube *12	1790*g
A040812	8ml*12	2325*g

## Centrifuge



### • Features

- ◆ Strong Plastic case with metal lid
- ◆ Brushless motor, LCD display speed, RCF and timer
- ◆ Over speed and imbalance alarm
- ◆ Touch panel control, automatic stop once lid open
- ◆ Error code display, speed up and down adjustment
- ◆ Suit for qualitative analysis of blood serum and plasma

### • Specifications

Model	LC-04L
Max. RPM	4000 RPM, stepless speed adjustment
Max. RCF	2325*g
Timer	0-99min
Rotor Capacity	20ml*12 (standard)
Voltage	110V 60Hz /220V50Hz
Dimension(mm)	320*340*280mm & 9kg

Option Rotor	Rotor capacity	Max. RCF
A042006	20ml*6	1790*g
A042008	20ml*8	2325*g
A041518	15ml*18	2325*g
A041012	10ml *12	2325*g
A040512	5ml eppendorf tube *12	1790*g
A040812	8ml*12	2325*g